



Shorncliffe station precinct heritage restoration

PROJECT UPDATE – OCTOBER 2019

Queensland Rail is continuing works at Shorncliffe station in preparation for restoring the historic station building. The project will involve repairs to the station building's foundations and walls, replacing the roof, cleaning and painting surfaces, restoring the air raid shelter, and constructing a new staff operations facility.

Queensland Rail is committed to the restoration of Shorncliffe station and is prioritising heritage considerations as the project progresses through design and implementation, reflecting community feedback received during the consultation phase.

Investigations and design works

In 2018, Queensland Rail completed the new staff operations facility for train crew and established temporary ticket facilities and platform access at the station. The project team then began investigations into the structure of the original building to help inform the scope of works for the major heritage restoration.

Recently, hundreds of objects were uncovered in the subfloor of Shorncliffe train station. Initial assessment of the heritage items – including train tickets, clothing, newspapers, and bottles – suggest the items date back to the 1950s.



1950s artefacts discovered at Shorncliffe train station

For further information, please contact 13 16 17 or email communityengagement@qr.com.au

Independent heritage assessors Niche Environment and Heritage were engaged to assist Queensland Rail to safely remove the items from the subfloor, catalogue them and ensure all activities met best practice heritage investigation processes.

Construction timeframe

While undertaking the initial investigative works, Queensland Rail also detected significant structural issues with the station building, which will need to be addressed through bracing and staged works as part of the restoration project.

The impact of the heritage discoveries and structural issues have meant Queensland Rail is reassessing the project timeframes to include these changes to scope. While these extra works will affect the project timelines, it's extremely important that we get this project right and treat this 1912 building – and piece of our local history – with respect.

In the coming weeks, you may notice activity on site as our team undertakes further excavations following the removal of heritage items. Once this work is complete, Queensland Rail will provide a detailed update for the community and plan to showcase the items in the near future.

Detailed design will follow this activity and Queensland Rail will share the designs for community feedback.

Temporary ticket office and platform access

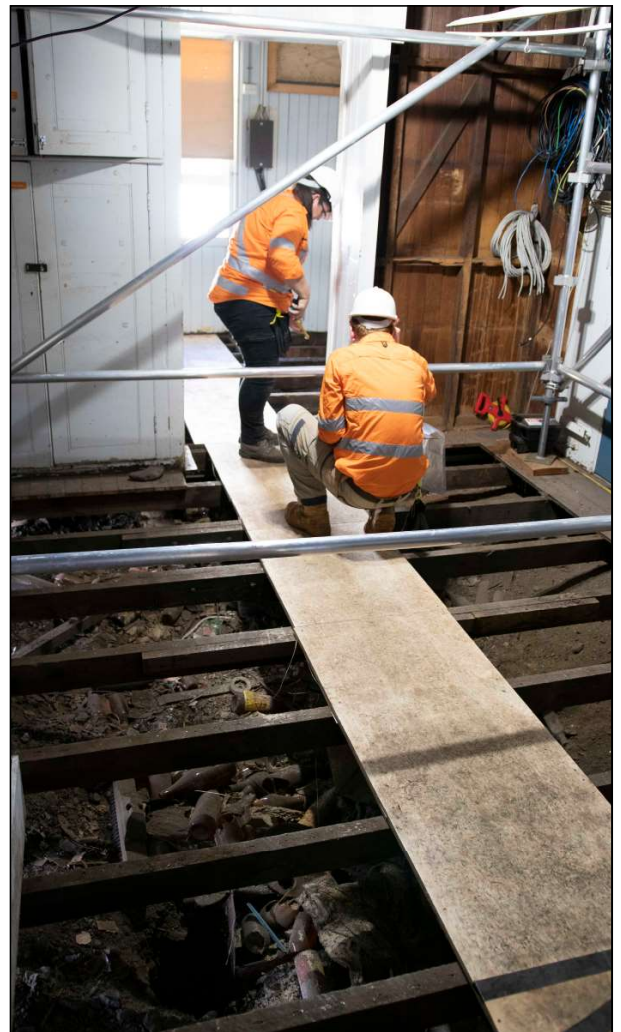
The temporary ticket office and new platform access to the west of the station building will remain in place while the station's restoration works continue.

Keeping you informed

Queensland Rail is committed to keeping stakeholders and the community informed about this project. For more information, please call 13 16 17 between 7.15am and 5pm Monday to Friday or email communityengagement@qr.com.au



Artist's impression of Shorncliffe historic station building restoration



Queensland Rail project workers unearthing hundreds of objects in the subfloor of Shorncliffe train station