

Bundamba station accessibility upgrade



PROJECT UPDATE – FEBRUARY 2024

The Bundamba station accessibility upgrade is part of the State Government's ongoing investment to upgrade stations to make them accessible for everyone.

Project progress

Bundamba station upgrade works are progressing well with major activities taking place to install the lift shaft on the station building side in preparation for the new lifts.

Works are on track to raise and extend the station platforms to reduce the curve and gap between the platform and the train to improve customer boarding.

Upcoming works

Customers and the local community can expect to see the following activities in the next month:

- Foundation and construction works for the **new lifts and footbridge**
- Station building improvement works
- Platform shelter works
- Platform raising and extension works
- Piling and service works
- Kiss 'n' ride works near station carpark.

Impacts (see map on back)

- **Driveway access changes** - while access will remain available, there will be changes to entry and exit routes at times between 32 and 40 Mining Street
- **Station closure** - an accessible shuttle bus service (Route 501) is running between Booval and Bundamba stations and Bundamba TAFE from stops on Creek Street.

Please plan your travel by downloading the MyTranslink app, visiting translink.com.au or by calling **13 12 30**.



The new lift shaft and platform raising works

Work hours

Works will generally take place 6am to 6pm Monday to Saturday, unless notified.

Out of hours works - planned track closures

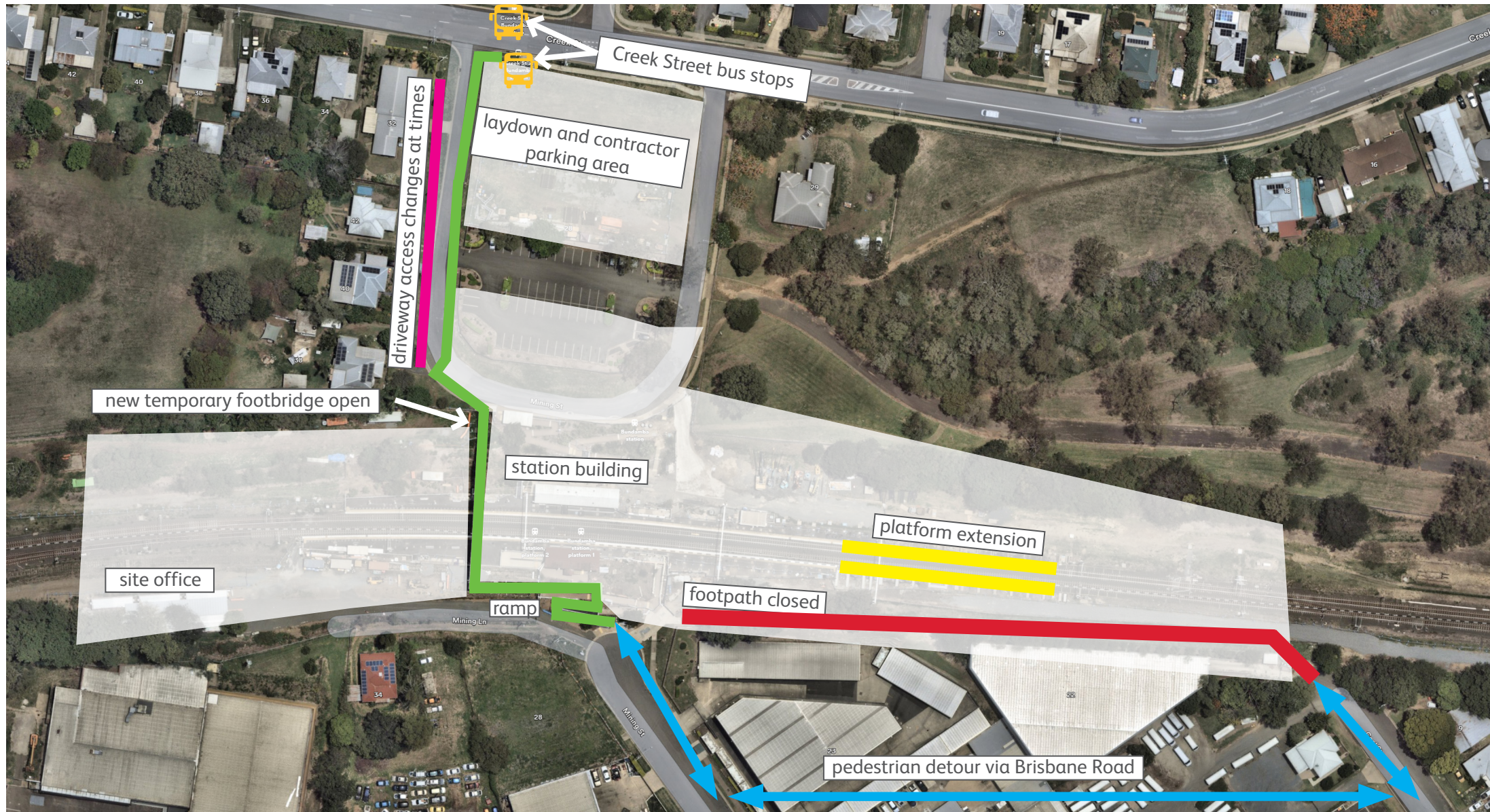
- **10 -12 May 2024** - from 11pm on Friday 10 May to 6pm on Sunday 12 May
- **2 - 4 August 2024** - from 11pm on Friday 2 August to 6pm on Sunday 4 August

Contact us

- Phone: **1800 722 203** (free call)
- Email: stationsupgrade@qr.com.au
- Website: queenslandrail.com.au



Platform raising and extension works



- Pedestrian access
 - Driveway access changes
- Footpath closed
 - Works area - closed
- Platform extension
 - Pedestrian detour