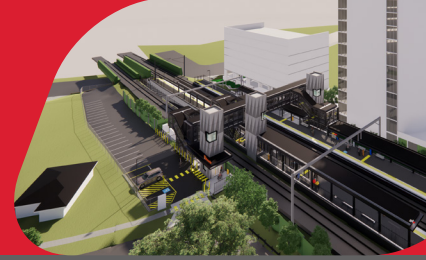


# Buranda station accessibility upgrade



PROJECT UPDATE – DECEMBER 2023

The Buranda station accessibility upgrade is part of the State Government's ongoing investment to upgrade stations to make them accessible for everyone.

## About the project

Buranda station is being upgraded to make it more accessible, and easier for customers and the community to travel on our network.

The new, modern station will help people in wheelchairs, parents with prams and those travelling with luggage or who are injured, use the station with ease.

## Station closure (8 January 2024 to 2025)

To fast-track construction and deliver the upgrade as safely as possible, the station will temporarily close from Monday 8 January 2024. During this time, trains will run express through the station. Customers can look forward to the station reopening in 2025.

## Alternative transport during the closure

Buranda busway station is next to Buranda station and has lots of alternative transport options. Park Road and Coorparoo are the closest stations to Buranda and will remain open during the upgrade.

You can plan your travel by downloading the **MyTranslink app**, visiting [translink.com.au](https://www.translink.com.au) or by calling **13 12 30**.

## Project status

Site establishment works are progressing at 13 Arne Street (see image across) and will continue until late-December in preparation for main construction to commence on 8 January 2024.

The following works have been carried out recently at Buranda station:

- installation of fencing at 13 Arne Street
- property condition surveys in the surrounding area
- vegetation trimming and removal to allow for upcoming station infrastructure
- geotechnical investigations in the Buranda station precinct.

## Upcoming works

Customers and the local community can expect to see the following activities in the coming weeks:

- finalisation of site establishment works (late-December)
- preparatory works for the upcoming station closure.

Works will generally take place between **6am and 6pm Monday to Saturday**, unless notified. Every effort will be made to carry out these works with respect for our neighbours and customers.

From **11.59pm Sunday 7 January to 4.30am Monday 8 January**, works will take place on the platform and within the station precinct in preparation for the station closure.

## Impacts

From Monday 8 January, you can expect:

- closure of Buranda station and the park 'n' ride
- closure of the subway and access path between Logan Road and Buranda station
- closure of the station footbridge; a pedestrian detour will be in place via Logan Road to access the southern side of the rail corridor and Buranda busway station (see map on reverse)
- construction noise and machinery.

## Contact us

- Phone: **1800 722 203** (free call)
- Email: [stationsupgrade@qr.com.au](mailto:stationsupgrade@qr.com.au)
- Website: [queenslandrail.com.au](https://www.queenslandrail.com.au)



# Buranda footbridge closure from Monday 8 January 2024

Pedestrian detour to the southern side of the rail corridor and Buranda busway station

- Pedestrian detour from Arne Street:
  - 12 minute walk to Gillingham Street
  - 16 minute walk to Buranda busway station
- 1 Platform 1, Buranda busway (inbound)
- 2 Platform 2, Buranda busway (outbound)

