

Buranda station accessibility upgrade

Quarterly project update | April 2024

The Buranda station accessibility upgrade is part of the State Government's ongoing investment to upgrade stations to make them accessible for everyone.



Project benefits

Buranda station is being upgraded to make it more accessible, and easier for customers and the community to travel on our network. The new, modern station will help people in wheelchairs, parents with prams and those travelling with luggage or who are injured use the station with ease.



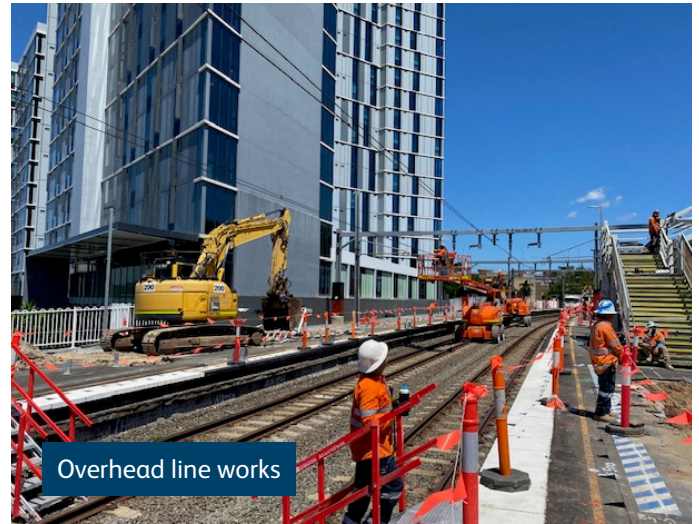
Construction progress

Since the closure of Buranda station on Monday 8 January 2024, major work has been progressing on site including:

- ✓ site establishment
- ✓ removal and demolition of old timber footbridge, stairs and footings
- ✓ demolition of temporary platforms and shelters
- ✓ construction of piling pads
- ✓ civil works for the new platform shelter
- ✓ overhead line works including installation of new masts and demolition of redundant masts.



Demolition of footbridge stairs



Upcoming works

You can expect to see the following upcoming activities on site:

- micro piling for the station building awning
- piling works for new footbridge, lifts and retaining walls
- platform foundation works
- lift shaft installation works
- installation of pre-cast concrete platform edges
- commencement of platform raising.

Works will generally take place between 6am and 6pm Monday to Saturday, unless notified. Every effort will be made to carry out these works with respect for our neighbours and customers.

We appreciate the community's understanding while we work to build you a better station.

More information

Scan the QR code to visit the [project page](#) on our website. For more information, please contact the project team on free call [1800 722 203](tel:1800722203) or email stationsupgrade@qr.com.au.

Follow us on social to stay up to date.

