

# Carpark and footbridge closure

## Friday 24 to Sunday 26 November

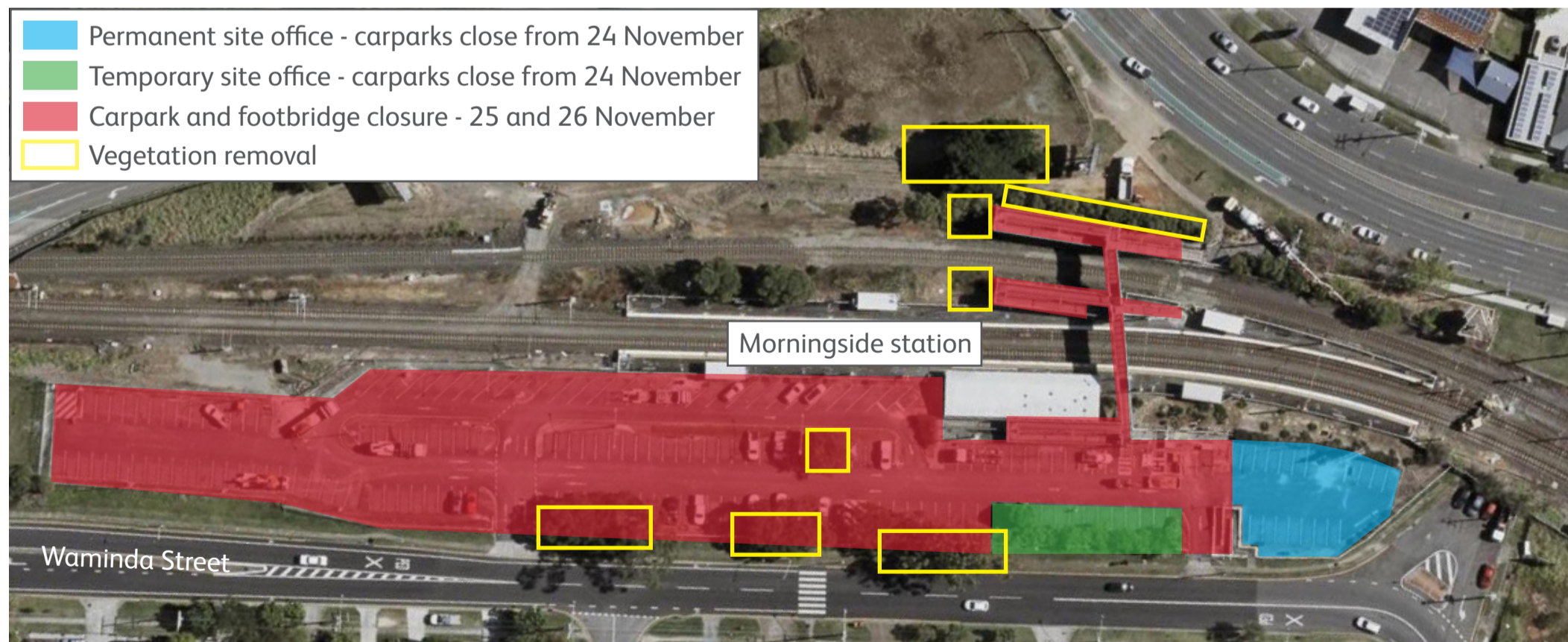
Queensland Rail will carry out vegetation and site establishment works at Morningside station, to assist with the upcoming station upgrade.

From **Friday 24 November**, two areas within the park 'n' ride will close. One area will remain closed for the duration of the upgrade, to accommodate the contractor's site office. The other will be a temporary site office, which will remain in place until **Friday 22 December** (see map below).

On **Saturday 25 and Sunday 26 November** the remainder of the station carpark and footbridge will be temporarily closed to facilitate vegetation removal and site establishment works.

Please assist by removing your vehicle from the affected carparks by **11pm on Thursday 23 and Friday 24 November**.

We appreciate your cooperation and patience while we work towards building you a better station.



For more information, please contact the project team on free call [1800 722 203](tel:1800722203) or email [stationsupgrade@qr.com.au](mailto:stationsupgrade@qr.com.au)