

# Works notification

## Morningside



### Why?

Queensland Rail will carry out vegetation removal and site establishment works at Morningside station, to assist with the upcoming station upgrade. A qualified fauna catcher/spotter will supervise these works to ensure the protection and safe removal of animals prior to commencing vegetation activities.



### When?

Vegetation and site establishment works will occur from:

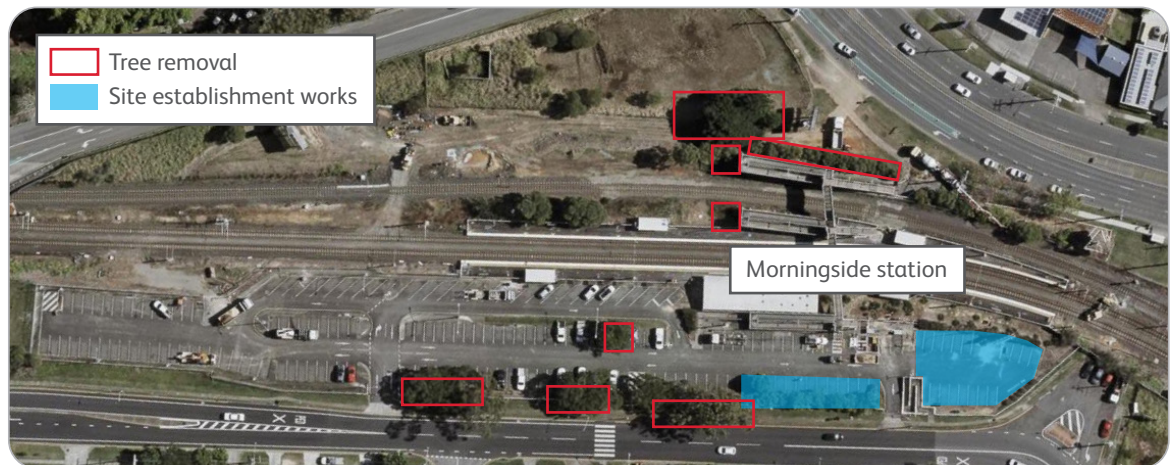
- 4am to 6pm on Friday 24 and Saturday 25 November
- 6am to 6pm on Sunday 26 November.

A track closure will be in place from **Saturday 25 to Sunday 26 November**. To connect electricity to the compound, Energex will attend the site between **Friday 3 and Friday 24 November**. Electrical works will take place from **7pm to 9pm** within this date range.



### Where?

Works will be occurring at Morningside station.



Map data © 2023 Google



### Impacts



Trucks, machinery and construction noise



Hand held tools, including chainsaws



Out of hours and weekend works

Every effort will be made to carry out these works with respect for our valued neighbours. We apologise for any inconvenience and thank you for your patience as we work to improve our network.

Works may be subject to change due to weather conditions and operational requirements.

If you would like to receive electronic copies of our works notices, please sign up at [queenslandrail.com.au/EmailNotification](https://queenslandrail.com.au/EmailNotification)

For more information, please contact the project team on free call **1800 722 203** or email [stationsupgrade@qr.com.au](mailto:stationsupgrade@qr.com.au)

