

# Ferny Grove station changes

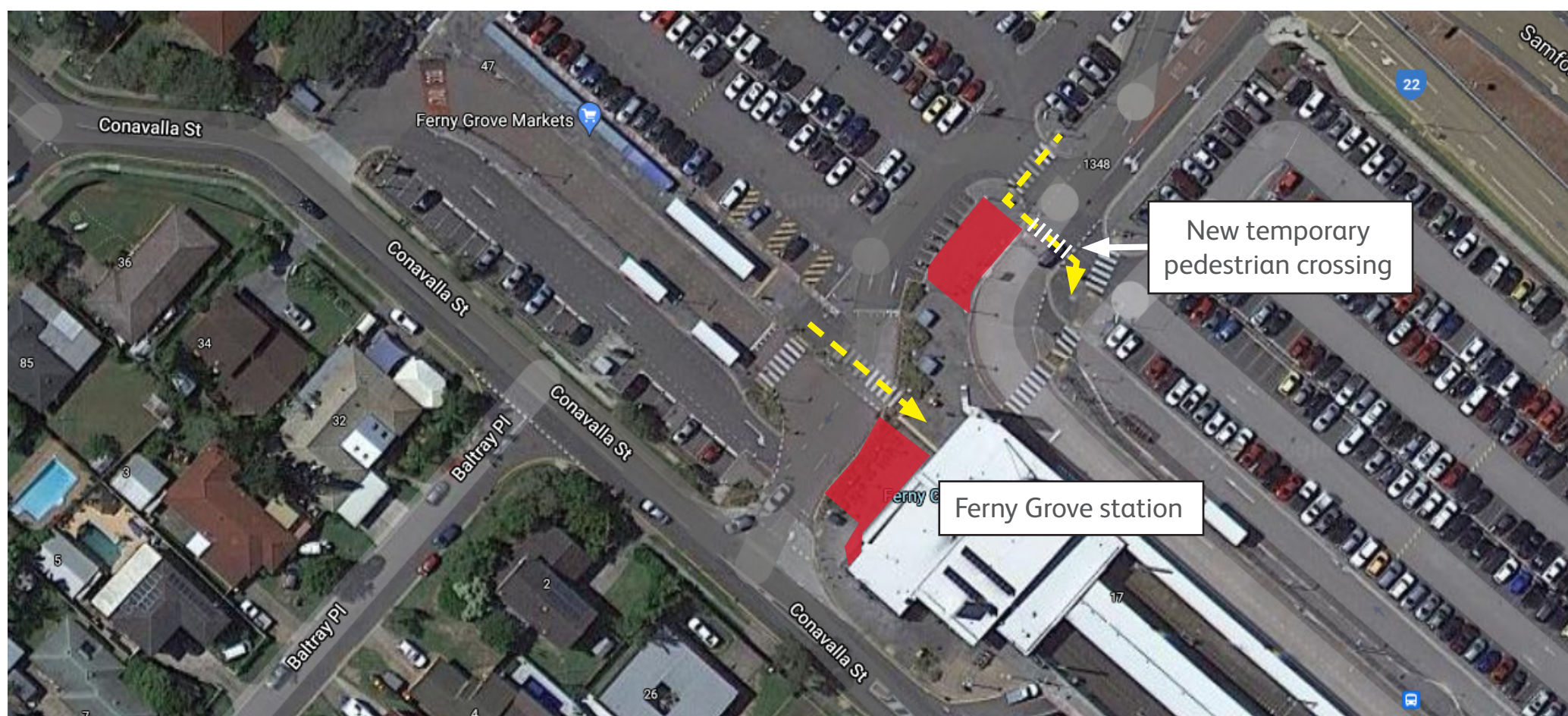
## Saturday 10 and Monday 12 July 2021

To support the Ferny Grove Transit Oriented Development (TOD), works will be taking place in the station's park 'n' ride.

Temporary fencing and site sheds will be installed at two locations within the park 'n' ride to enable the safe establishment of the contractor's site offices.

A temporary pedestrian crossing will be installed to safely divert customers around the new work sites (see map below).

Temporary fencing will be installed on **Saturday 10 July**, in preparation for the site sheds to be installed on **Monday 12 July**. The site offices will remain on site until approximately mid-2022.



Map data © 2021 Google

 Contractor's site offices  Pedestrian access paths to/from the station

We appreciate your patience as we work with Honeycombes Property Group to support the delivery of the Ferny Grove TOD.

For more information about the Ferny Grove TOD please visit [fernycastle.com.au](http://fernycastle.com.au)