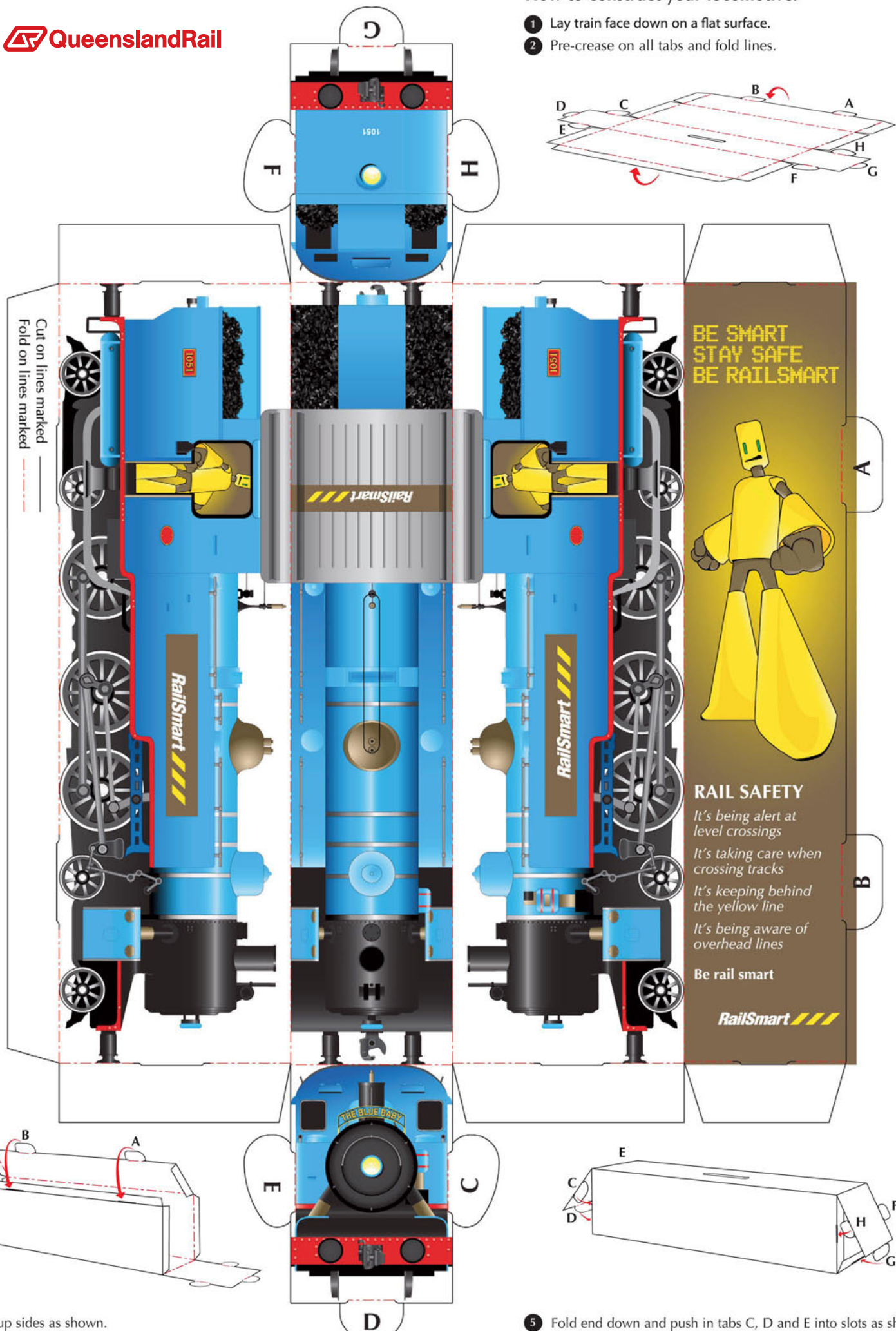
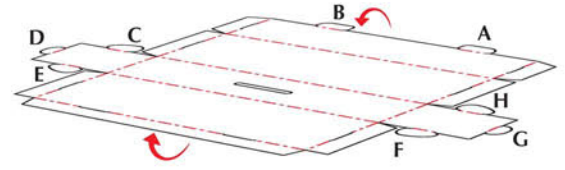


**How to construct your locomotive.**

- 1 Lay train face down on a flat surface.
- 2 Pre-crease on all tabs and fold lines.



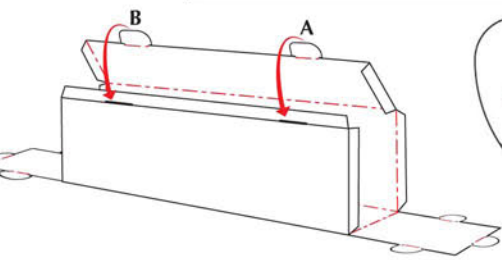
**BE SMART  
STAY SAFE  
BE RAILSMART**



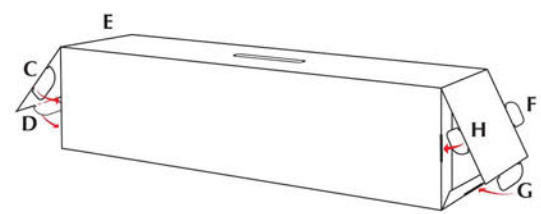
**RAIL SAFETY**

- It's being alert at level crossings*
- It's taking care when crossing tracks*
- It's keeping behind the yellow line*
- It's being aware of overhead lines*

**Be rail smart**



- 3 Fold up sides as shown.
- 4 Lock tabs A and B into slots.



- 5 Fold end down and push in tabs C, D and E into slots as shown.
- 6 Fold front down and push in tabs F, G and H into slots as shown.