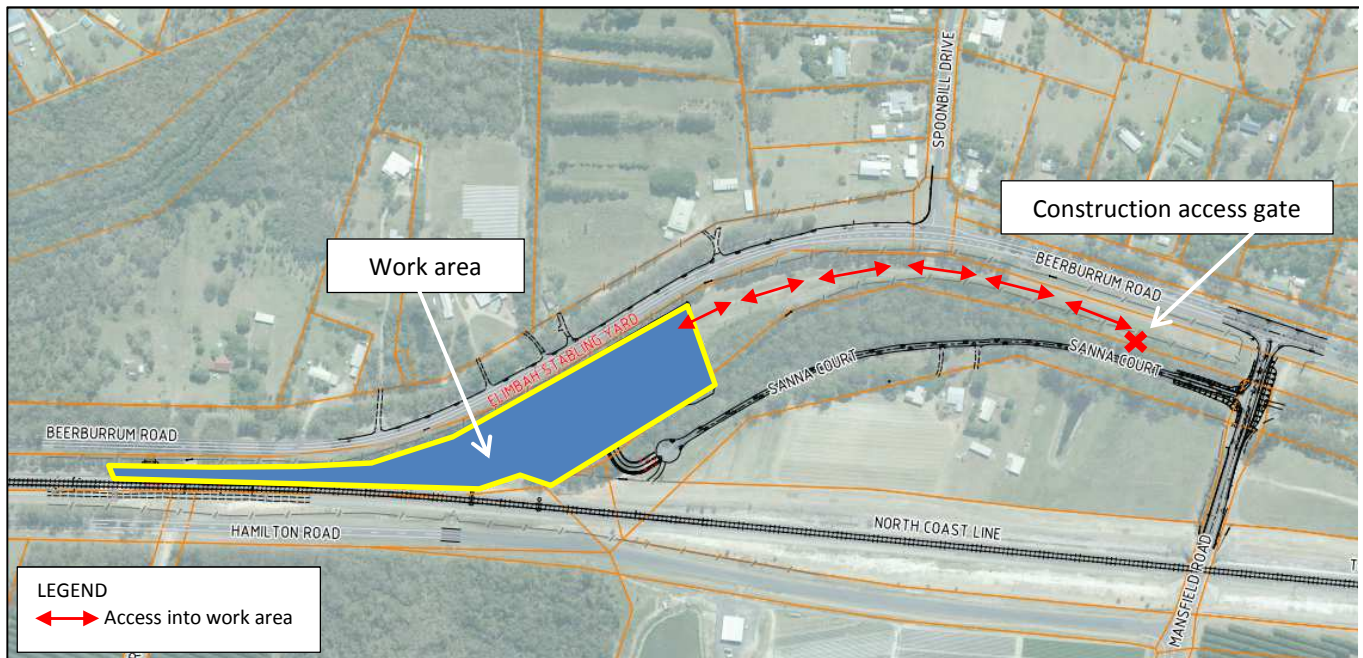


For your information



SEQ Rail Stabling Program - Elimbah Construction Update



Over the coming weeks from Monday, 28 September 2015 various construction activities will be undertaken to build the stabling facility at Elimbah. Activities will include:

- Removal of vegetation within the project boundary
- Stripping of topsoil
- Earthworks to grade and level the construction area
- Transporting cut material using haulage trucks.

You will notice some changes around your local area including:

- Increased truck and vehicle movements on Beerburrum Road, Mansfield Road, Hamilton Road and Sanna Court.
- Construction work will be carried out between 6.30am and 5.00pm Monday to Saturday. Workers may arrive onsite between 5.30am and 6.30am to prepare for the day's activities
- Truck and construction vehicle movements in and out of Sanna Court
- Placement of temporary fencing around construction areas.

Every effort will be made to keep disruption to a minimum. We appreciate your patience during the construction period and will continue to update you as work progresses.

Where can I find out more information?

If you have any questions or would like to register for more information, please contact the Project Team on **1800 783 334** (free call) or stabling@qr.com.au. Visit www.queenslandrail.com.au/stabling anytime for more information and updates.



SEQ Rail Stabling Program - Elimbah Construction Update

Project information

The South East Queensland (SEQ) Stabling Program involves the design and construction of new or additional train stabling facilities in four locations: Robina, Banyo, Elimbah and Woombye.

The \$116 million project was announced on Wednesday, 6 May 2015. The SEQ Stabling Program is part of the broader New Generation Rollingstock project that will see 75 new suburban six-car trains added to the South East Queensland City network, a 30 per cent increase of the current fleet.

Leighton Contractors will design and construct the new stabling facilities to help house 75 new six-car trains which will commence services in mid-2016.