

SEQ Rail Stabling Program Banyo - February construction update

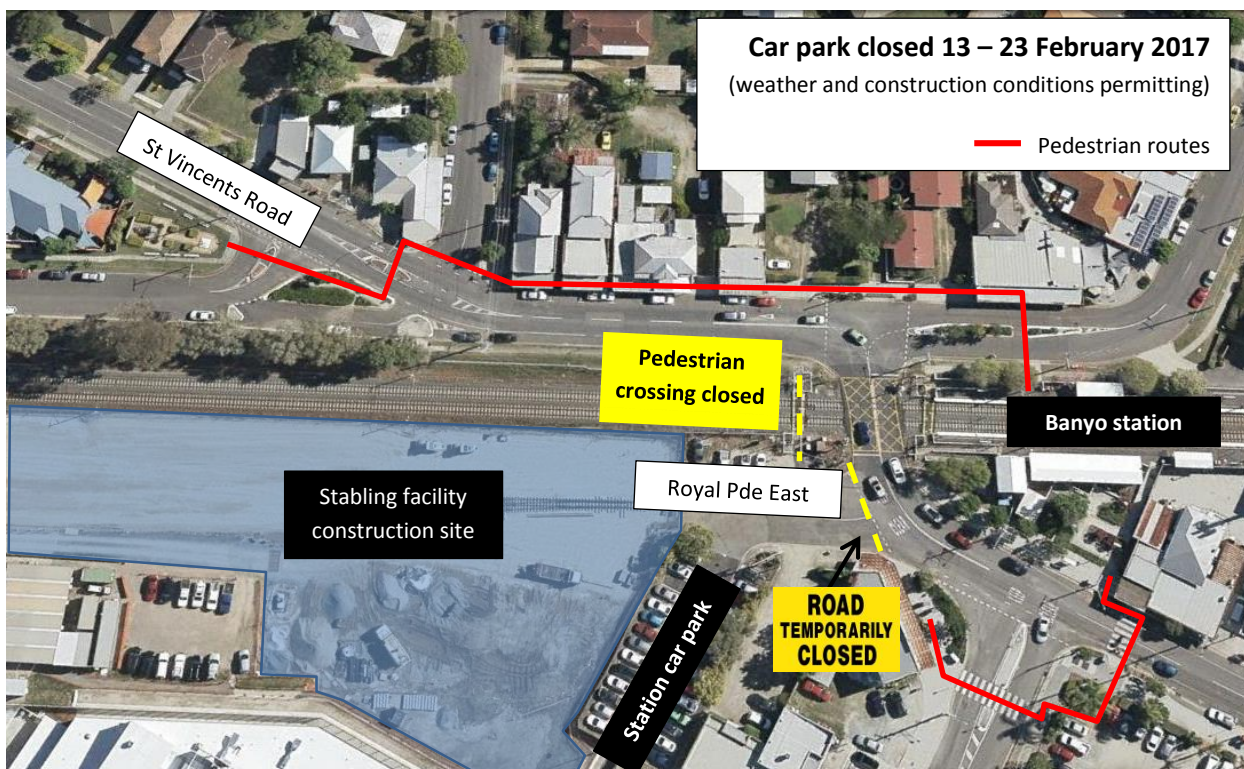
As part of construction of the Banyo stabling facility, Queensland Rail and CPB Contractors are continuing to undertake works between Bindha and Nudgee stations.

The following activities will continue to occur between **6.30am and 5pm, Monday to Saturday throughout February and March 2017**, weather and construction conditions permitting.

Activities include:

- Earthworks and construction of the stabling facility's access road and car park
- Earthworks and construction of extension to Banyo station car park*
- Construction of a visual barrier along Royal Parade
- Construction of stabling facility security fence
- Installation of associated utility services
- Installation of lighting and CCTV poles
- Installation of overhead electrical equipment.

* To allow these works to occur, vehicle and pedestrian access into **Royal Parade East will be closed from 6.30am Monday 13 February until 6pm Thursday 23 February 2017. This includes access to, and use of, the Banyo station car park.** Pedestrian access to General Taxation Services will be maintained.



For your information



You will notice the following around your local area and on-site during these works:

- Delivery trucks and workers' vehicles entering the site via Guardhouse Road, Railway Parade (north and south), Royal Parade, Purchase Street and Park Street
- Workers may begin arriving to site from approximately 5.30am to prepare for activities
- Vehicle routes will include St Vincents Road, Tufnell Road, Purchase Street, Earnshaw Road, Eames Street, Park Street and Royal Parade
- Delivery and unloading of materials and use of machinery such as excavators, mobile cranes, front-end loaders, generators, track mountable excavators and a smooth drum roller machine
- Use of small power tools such as drills, saws and minor vibrating equipment
- Changed traffic conditions, including reduced speed limits and short traffic delays, will be experienced. Traffic controllers will be on-site when required to assist with changes to pedestrian and vehicle movements.

We appreciate your patience during the construction period and will continue to update you as work progresses.

Further information

If you have any questions, or would like to register for more information, please contact the Project Team on 1800 783 334 (free call) or stabling@qr.com.au. CPB Contractors can be reached on 1800 783 334 (press 1).

Visit www.queenslandrail.com.au/stabling for more information and updates.