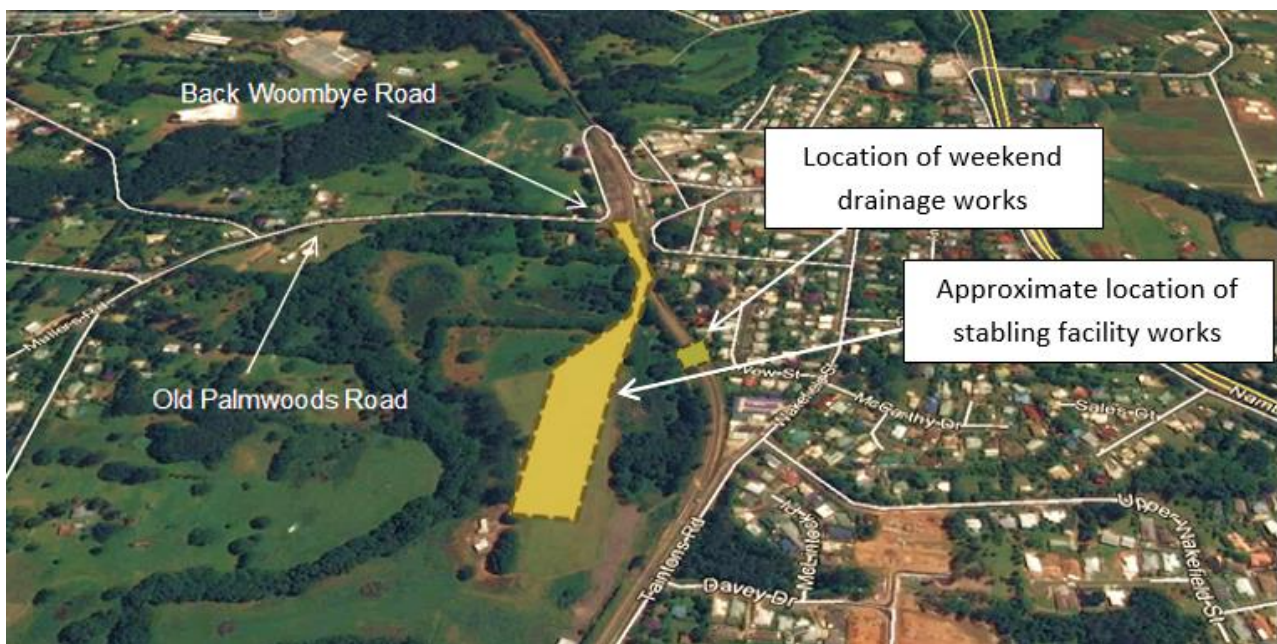


SEQ Rail Stabling Program – Woombye October construction update and weekend works



Queensland Rail and CPB Contractors are continuing work on the construction of the Woombye stabling facility. From **Friday 7 October to Sunday 9 October 2016 between 6.30am and 6pm** CPB Contractors will be undertaking activities to install additional drainage within the railway corridor.

Activities will include:

- Delivery and unloading of equipment and materials
- Minor earthworks
- Concreting
- Installation of a storm water pipe underneath the North Coast line adjacent to New Street.

In addition to the above works, the following construction activities will be undertaken **Monday to Saturday between 6.30am and 5pm, throughout October 2016**, weather and construction conditions permitting:

- Earthworks and ground preparation for the stabling facility access road and carpark
- Transporting materials such as capping and ballast using haulage trucks
- Installing drainage (including subsoil)
- Installing power and communication in-ground services
- Landscaping
- Installing the security fence for the stabling facility
- Placing rail, sleepers and ballast.

Construction activities will include the use of machinery such as excavators, mobile cranes, front-end loaders, generators, scrapers, dozer, grader, pad foot roller, smooth drum roller, vacuum excavation trucks, concrete truck, concrete pump and small power tools such as drills, track welders, saws and hammers.

For your information



You will notice the following around your local area and on-site during these works:

- Increased truck and vehicle movements along Old Palmwoods Road and Back Woombye Road from Monday to Saturday 6.30am to 5pm for deliveries of material and equipment to site
- Old Palmwoods Road, Back Woombye Road, Blackall Range Road and Reids Road will be the primary haulage routes during the project, however some light vehicles may use alternative routes depending on the origin of the supplier
- Prior to work commencing at 6.30am, workers may begin to arrive on-site from 5.30am.

The Project Team will endeavour to minimise impacts to neighboring residents and businesses including noise and dust during the construction of the Woombye stabling facility. We appreciate your patience during the construction period and will continue to update you as work progresses.

Who can I contact?

If you have any questions or would like to register for more information, please contact the Project Team on 1800 783 334 (free call) or stabling@qr.com.au.

During out of hours activities CPB Contractors can be reached on 1800 783 334 (press 1).

Visit www.queenslandrail.com.au/stabling anytime for more information and updates.