

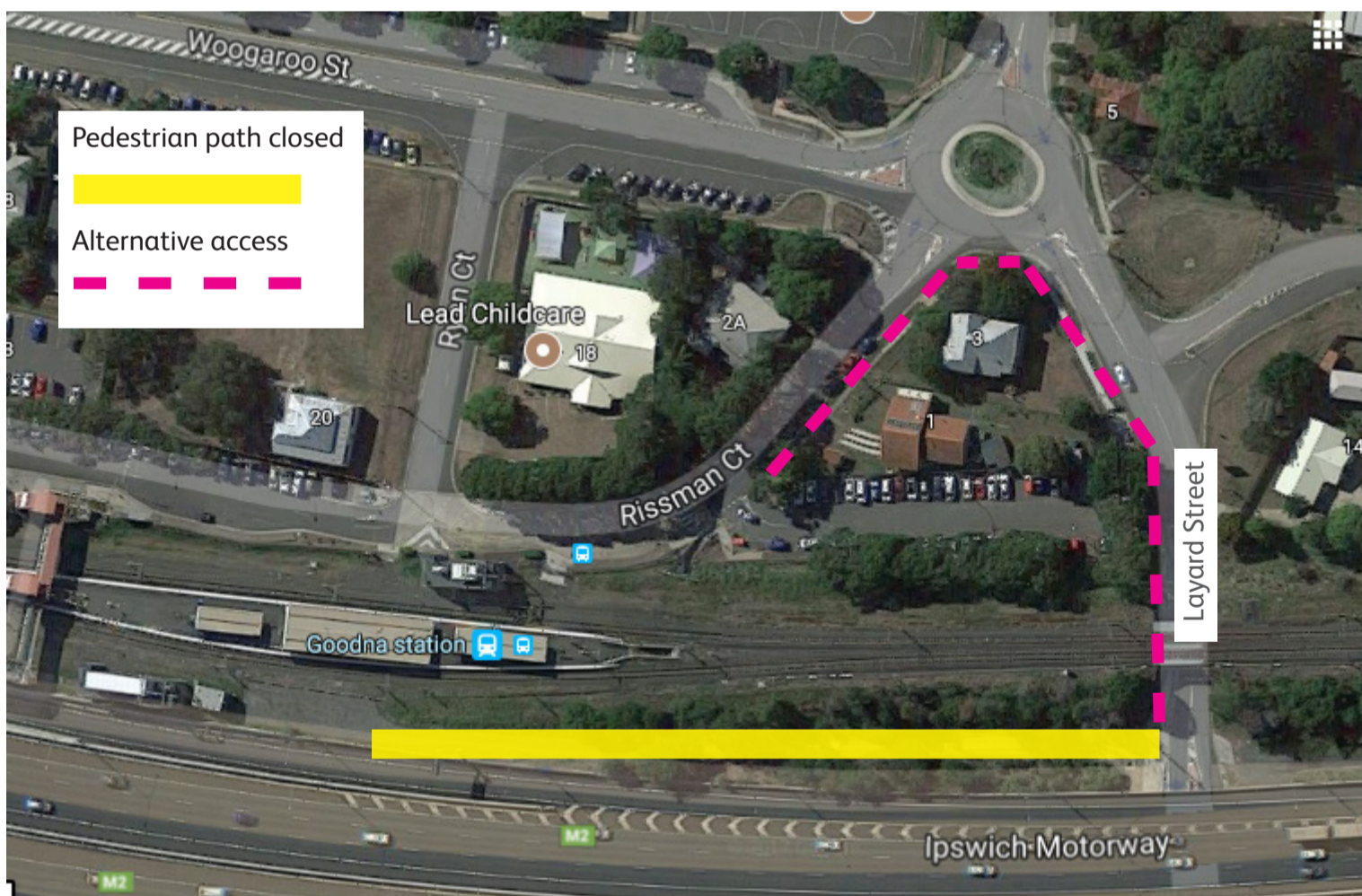
Temporary pedestrian path closure

From Monday 16 October 2017

The pedestrian access from Layard Street to Goodna station will be closed from Monday 16 October for approximately three weeks to facilitate landscaping works.

Pedestrians can access Goodna station via the path on Layard Street and the connecting path on Rissman Court.

We apologise for any inconvenience as we work to improve your station.



Map courtesy of Google Maps

If you require assistance with station access call **13 16 17** from 8am to 5pm Monday to Friday or text only **0428 774 636**
Visit translink.com.au or call **13 12 30** anytime for more information, updates or assistance out of hours