

Pedestrian detour – platform 1

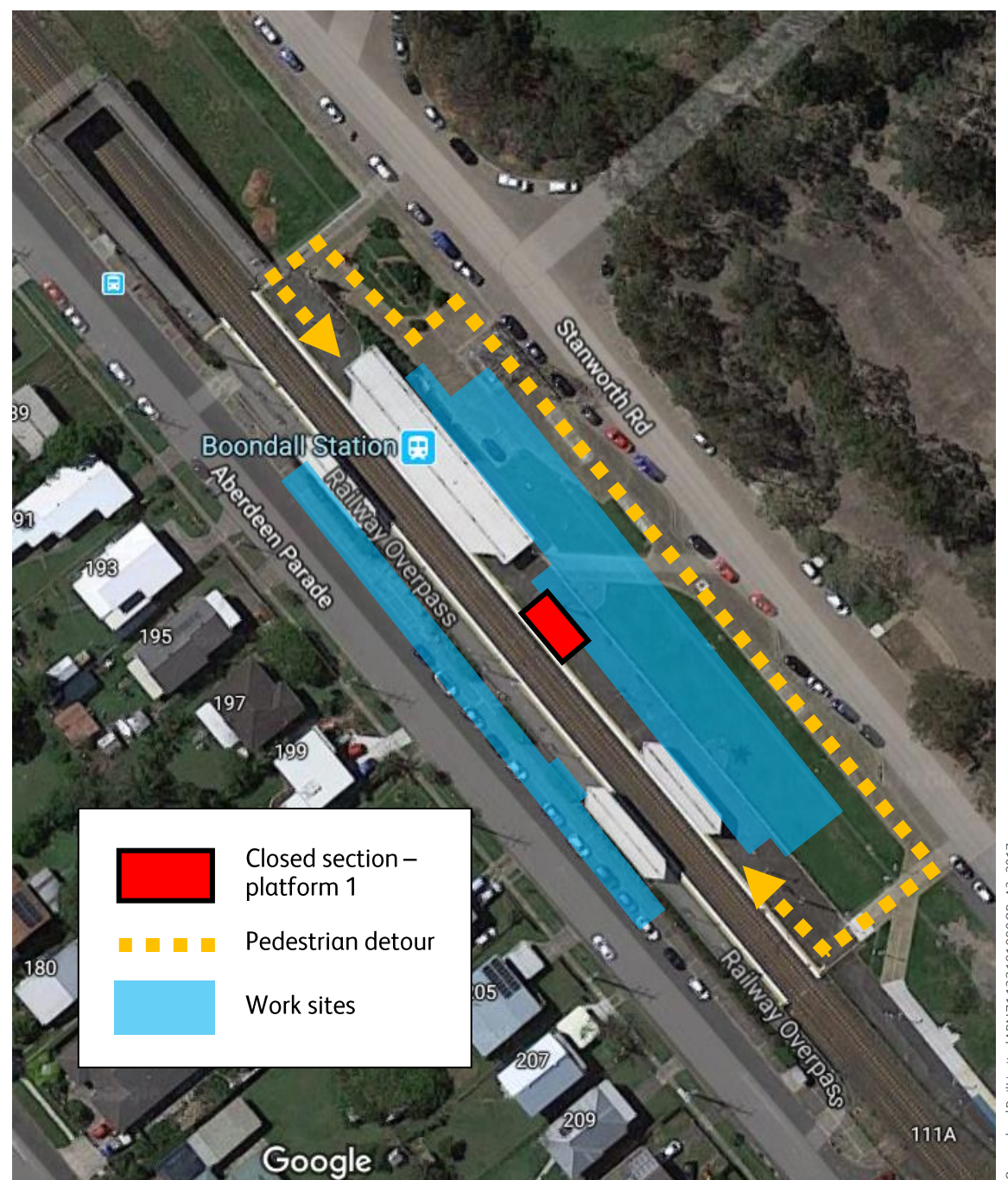
Monday 2 to Friday 6 September 2019

A section of platform 1 will be closed for construction works from Monday 2 to Friday 6 September.

During this time, access to the southern end of platform 1 will be via a pedestrian detour behind the station building (see map).

Please see station staff for assistance.

We apologise for any inconvenience and appreciate your patience as we work to improve your station.



For more information, please contact 1800 722 203 (free call) or email stationsupgrade@qr.com.au