

Graceville station accessibility upgrade

Project update – March 2017

The Graceville station accessibility upgrade is part of Queensland Rail's \$212 million station upgrade program and is expected to be completed by late-2017, weather and construction conditions permitting.

Project progress

The following construction activities were recently undertaken:

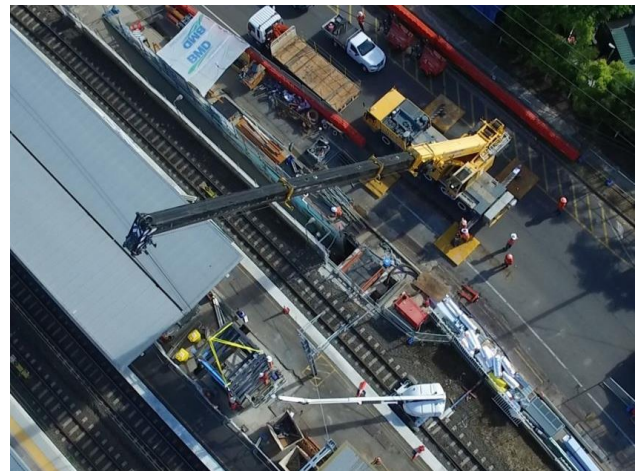
- installation of steel structures for the lift shaft on platform 1 and 2
- resurfacing of the northern end of platform 1 and 2
- commencement of platform-raising works on platform 1
- commencement of station office refurbishment works.

Upcoming work

In the coming weeks, customers and the community can expect to see the following construction activities:

- ongoing station office refurbishment
- commencement of staged upgrade works on platform 2
- lift shaft installation works.

Residents and other stakeholders will be given advance notification of construction activities likely to cause impacts, including after hours work (nights and Sundays, as required).



Construction impacts

Customers, residents and businesses adjacent to Graceville station may experience the following:

- noise associated with heavy machinery
- use of reversing beepers
- changed traffic and parking conditions
- mobile lighting towers for night works
- increased vehicle movements near works
- temporary changes to access paths throughout the station precinct.

Pedestrians and motorists are advised to follow all directional signage during this time.

Please take care around the work zones.

Keeping you informed

For more information on this project, please contact the Stakeholder Engagement team on **1800 722 203** (free call), email stationsupgrade@qr.com.au or visit queenslandrail.com.au