

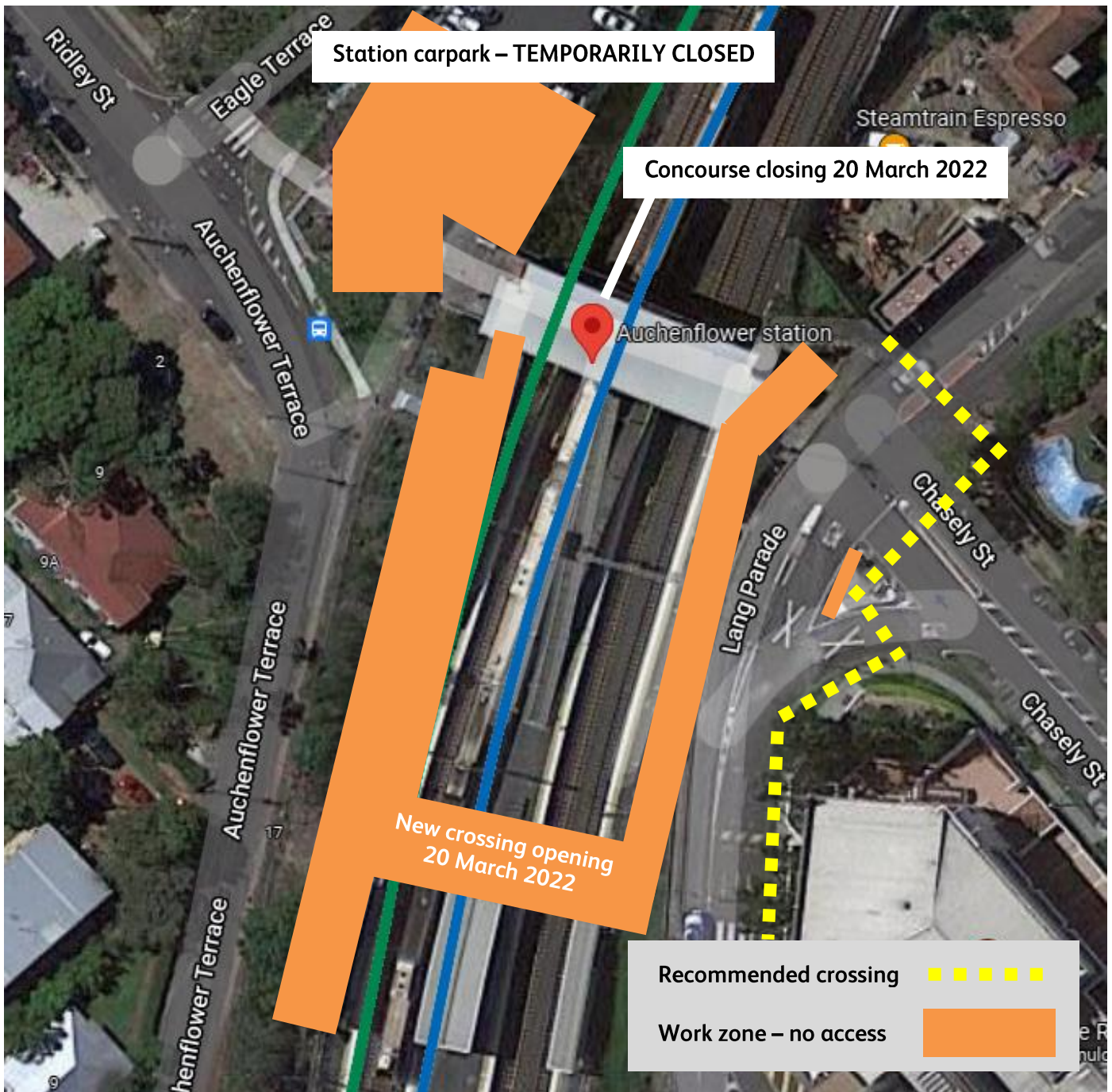
# Auchenflower station accessibility upgrade



WORKS NOTICE

## Pedestrian crossing – Lang Parade

For your safety, please follow all directional signage and cross only at the marked path, using designated pedestrian refuges.



For more information, please contact the project's community team on free call 1800 722 203 or email [stationsupgrade@qr.com.au](mailto:stationsupgrade@qr.com.au)