

Boondall station accessibility upgrade



PROJECT UPDATE – MARCH 2020

The Boondall station accessibility upgrade is part of the State Government's \$357 million investment to upgrade stations across the South East Queensland network, making them accessible for all customers.

Project progress

Activities recently undertaken at Boondall included:

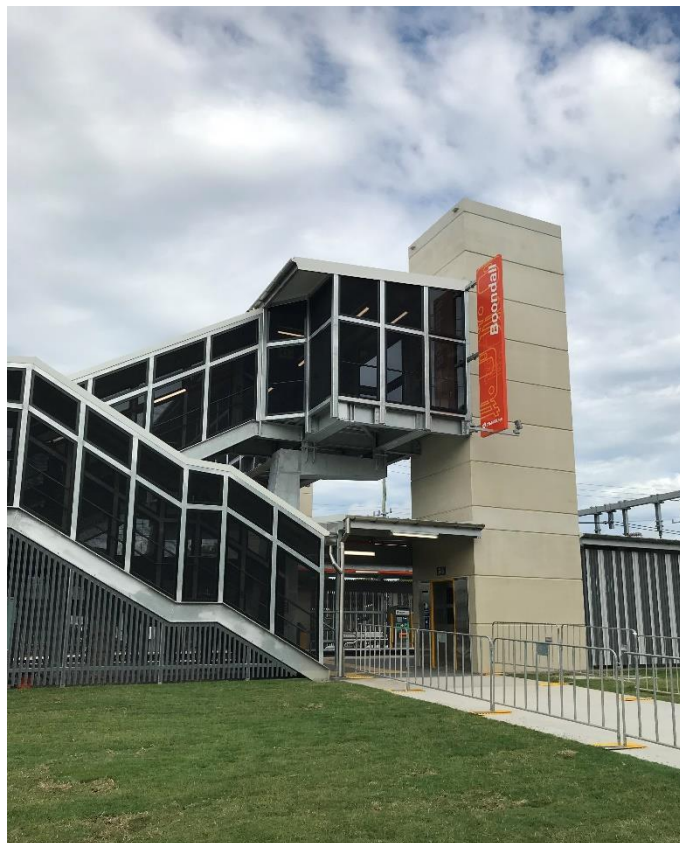
- ongoing station entrance, stairs and landscaping works
- installation of platform signage
- Aberdeen Parade footpath and asphalt works
- platform fencing
- painting – western entry walls.

Upcoming works

In the coming weeks, customers and the community can expect to see the following activities:

- minor works – station entrances and platforms
- completion of station signage
- light pole installation – bicycle enclosure
- installation of remaining lighting – platform 1.

Please follow all directional signage and take care around the work zones.



Construction impacts

Normal working hours are 6am to 5pm Monday to Saturday. Construction activities may involve:

- noise associated with heavy machinery
- temporary changes to station access paths
- changed traffic/parking conditions (Aberdeen Parade)
- increased vehicle movements near works
- mobile lighting towers for night works.

Local residents will be given advance notification of construction activities likely to cause impacts, including after hours work (nights and Sundays, as required).

Thank you for your patience and cooperation as we work to improve your station.

Contact us

For more information or to provide feedback:

- Phone: **1800 722 203** (free call)
- Email: **stationsupgrade@qr.com.au**
- Website: **queenslandrail.com.au**