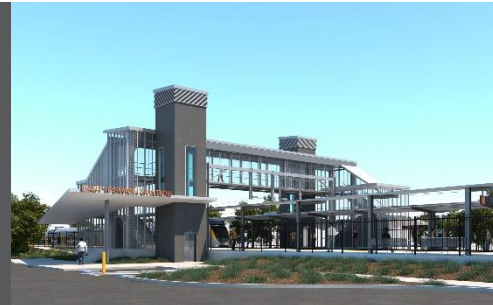


East Ipswich station accessibility upgrade



WORKS NOTICE

After hours works including weekend station closure

11.30pm Friday 11 to 4am Monday 14 June 2021

As part of the East Ipswich station accessibility upgrade, night and weekend works will be undertaken from **11.30pm on Friday 11 to 4am Monday 14 June** (weather and construction conditions permitting).

Rail services will not stop at East Ipswich on Saturday 12 and Sunday 13 June. All Ipswich and Rosewood line services will continue as scheduled.

A free shuttle will operate every 30 minutes from Merton Street and Coronation Street to transport customers to and from Ipswich station, providing a connection to scheduled rail services. Please allow at least an additional 30 minutes for travel or consider using an alternative station, if convenient.

The station's footbridge will remain open for cross-corridor pedestrian traffic. The Coronation/Gibbon Street station entrance will be closed for works all weekend.

For safety of the public and workers, Merton Street will be closed to traffic during works. Access to private properties will be maintained at the instruction of the traffic controller.

Nearby residents may experience noise associated with construction activity and truck movements. Mobile lighting towers will be used during night works.

Scheduled works

Location	Dates and hours of work	Type of work
East Ipswich station precinct	<i>After hours works:</i> <ul style="list-style-type: none">11.30pm Friday 11 to 4am Monday 14 June (continuous works)	Station upgrade works involving: <ul style="list-style-type: none">platform raising activitiesheavy machinery and trucks with flashing lights and reversing beepershand-held tools and powered equipmentmovement of people and vehicles around the stationportable lighting in use at nightroad closure and traffic management (Merton Street).
Coronation Street entrance – closed		
Footbridge – open	<i>Station closed with no services stopping on Saturday 12 and Sunday 13 June.</i>	
Merton Street – road closed		

Queensland Rail Limited ABN 71 132 181 090

This weekend closure will allow uninterrupted access for platform works without disrupting services on the Ipswich and Rosewood line. These intensive works are an important step towards project completion.

The East Ipswich station accessibility upgrade is part of the State Government's investment of more than \$500 million to upgrade stations across the South East Queensland network, making them accessible for all customers. For more information, please contact the project's community team on free call **1800 722 203** or email stationsupgrade@qr.com.au

Works notices will be electronic from 1 July 2021

We are moving to paperless notifications about noisy and out of hours works. Sign up on our website or contact us on 13 16 17 if you prefer to receive paper copies.

Sign up at queenslandrail.com.au/EmailNotification

