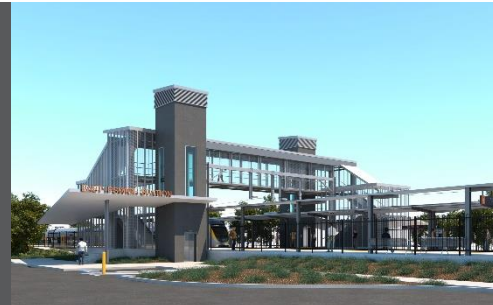


East Ipswich station accessibility upgrade



WORKS NOTICE

After hours works including weekend station closure

11.30pm Friday 27 to 5am Monday 30 November 2020

As part of the East Ipswich station accessibility upgrade, night and weekend works will be undertaken from **11.30pm on Friday 27 to 5am Monday 30 November**.

Rail services will not stop at East Ipswich on Saturday 28 and Sunday 29 November. All Ipswich and Rosewood line services will continue as scheduled.

A free shuttle will operate every 30 minutes from Merton Street and Coronation Street to transport customers to and from Ipswich station, providing a connection to scheduled rail services. Please allow at least an additional 30 minutes for travel or consider using an alternative station, if convenient.

This weekend closure will allow uninterrupted access for platform works without disrupting services on the Ipswich and Rosewood line. These intensive works are a critical step towards project completion.

During these works, the station's footbridge will remain open for cross-corridor pedestrian traffic. The Coronation/Gibbon Street station entrance will be closed for works all weekend.

Residents near the station may experience some noise associated with construction activity and truck movements. Mobile lighting towers will be used during night works.

Scheduled works

Location	Dates and hours of work	Type of work
East Ipswich station precinct	<p><i>After hours works:</i></p> <ul style="list-style-type: none">11.30pm Friday 27 to 5am Monday 30 November (continuous works) <p><i>Station closed with no services stopping on Saturday 28 and Sunday 29 December.</i></p>	<p>Station upgrade works involving:</p> <ul style="list-style-type: none">piling (drilling) station and platform foundationsheavy machinery and trucks with flashing lights and reversing beepershand-held tools and powered equipmentmovement of people and vehicles around the station precinctportable lighting in use at night.

Queensland Rail Limited ABN 71 132 181 090

The East Ipswich station accessibility upgrade is part of State Government's investment to upgrade stations across the South East Queensland network, making them accessible for all customers. For more information, please contact the project's community team on free call **1800 722 203** or email stationsupgrade@qr.com.au

Subscribe for updates

We are moving to paperless notifications about noise and works. Sign up on our website or contact us if you prefer to receive paper copies.

Sign up at queenslandrail.com.au/EmailNotifications

