

Timber bridge replacements

Noise notice

Saturday 8 to Tuesday 11 September 2018

Queensland Rail is replacing 18 rail bridges between Ipswich and Chinchilla with more durable steel structures to improve the safety and reliability of our network.

Continuous works will be undertaken during a scheduled track closure in September to replace one of these timber bridges, located approximately one kilometre west of Rosewood (see the map overleaf for further information). These works will be undertaken on a 24-hour basis while there are no services using the rail line, in order to minimise impact for our customers.

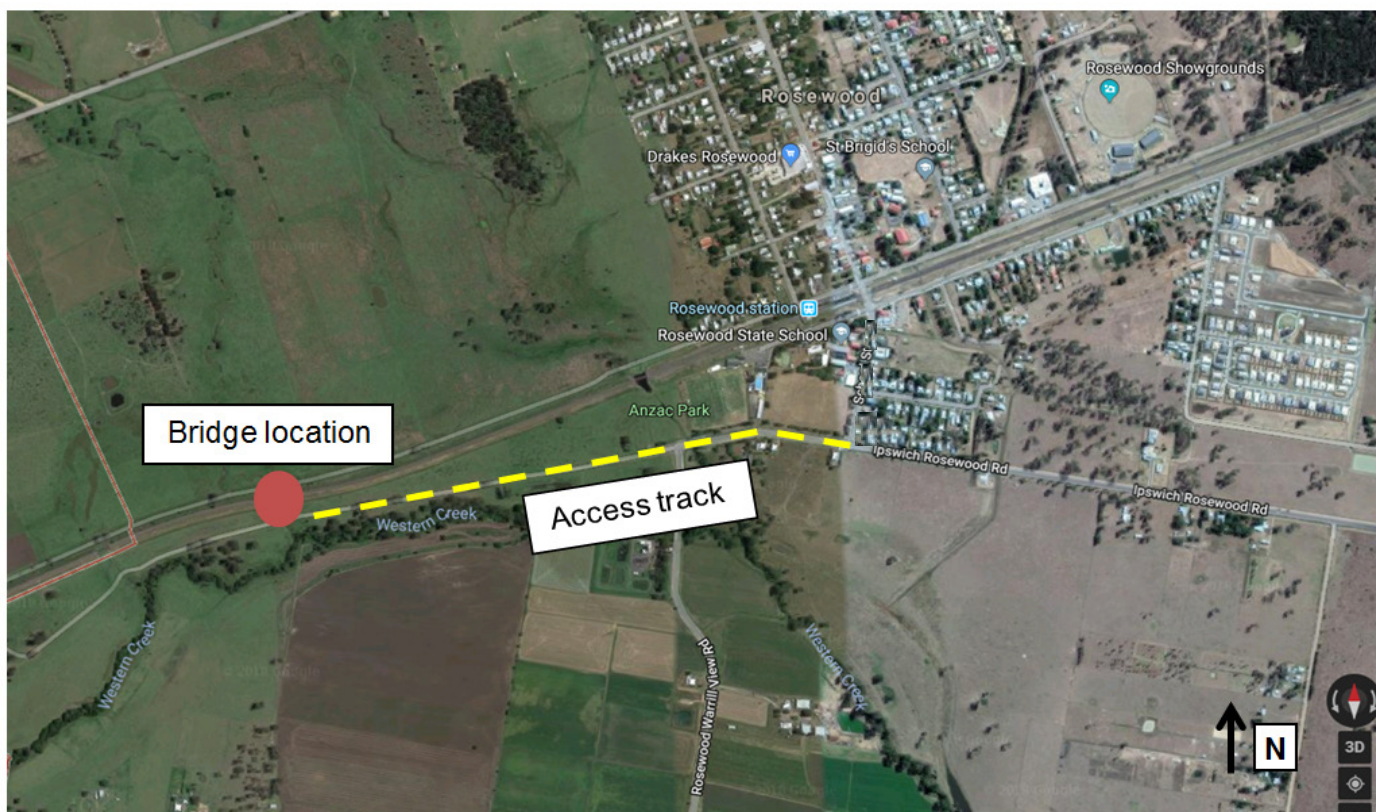
Overview of work

Location	Dates and hours of work	Type of work and impacts
Rail bridge approximately 1km west of Rosewood (see map overleaf)	6am Saturday 8 to 6pm Tuesday 11 September 2018. As continuous works.	Removal of existing rail, ballast and bridge and installation of a new structure along with replacement of rail and ballast. This includes the use of: <ul style="list-style-type: none">• heavy machinery including a crane and trucks with reversing beepers and flashing lights• hand tools including welding equipment• a generator and lighting towers.

Every effort will be made to carry out these works with respect for our valued neighbours and we apologise for any inconvenience.

For more information, call **13 16 17** (business hours) or email communityengagement@qr.com.au

Works location



Map data © 2018 Google