

Timber bridge replacements

October 2018

Queensland Rail is replacing 18 rail bridges between Ipswich and Chinchilla with more durable steel structures to improve the safety and reliability of our network.

Works have commenced on the rail bridge, adjacent to Morris Road at Gowrie Junction, to prepare the bridge for replacement, which will occur in 2019. These initial works include piling activities, which may require the temporary closure of access to East Paulsens Road at times.

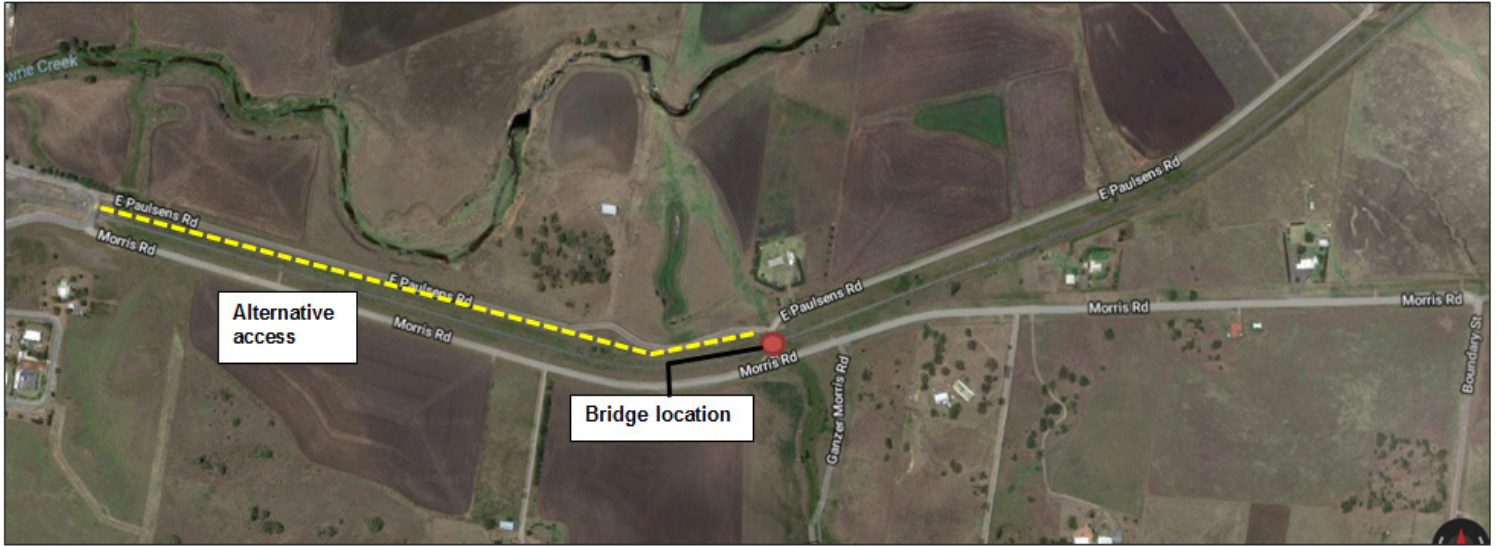
Overview of work

Location	Dates and hours of work	Type of work and impacts
Rail bridge adjacent to Morris Road, Gowrie Junction (see map overleaf)	<p>From Monday 15 October 2018 for approximately three weeks (weather and construction conditions permitting)</p> <p>6.30am to 6.30pm (Monday to Saturday)</p> <p>Piling works to occur for approximately two days during this period (road closure impacts)</p> <p>Contractors will inform impacted properties 24 hours in advance of access changes.</p>	<p>Site establishment, piling and preparation works ahead of bridge replacement.</p> <ul style="list-style-type: none">• Heavy machinery including piling rig, crane and trucks with reversing beepers and flashing lights• Access to East Paulsens Road may be impacted during piling activities.

Every effort will be made to carry out these works with minimal disruption and we thank you for your cooperation during these works.

For further information, please contact **13 16 17** or email communityengagement@qr.com.au

Bridge location



Map data © 2018 Google