

# Timber bridge replacements

## Grandchester – November 2018

Queensland Rail is replacing 18 rail bridges between Ipswich and Chinchilla with more durable steel structures to improve the safety and reliability of our network.

Continuous works will be undertaken during a scheduled track closure in November to replace one of these timber bridges, located approximately 2.5km east of Grandchester (see the map overleaf for further information). These works will be undertaken on a 24-hour basis while there are no services using the rail line, in order to minimise impact for our customers.

Prior to this closure, works will be undertaken during day hours to prepare the bridge for replacement.

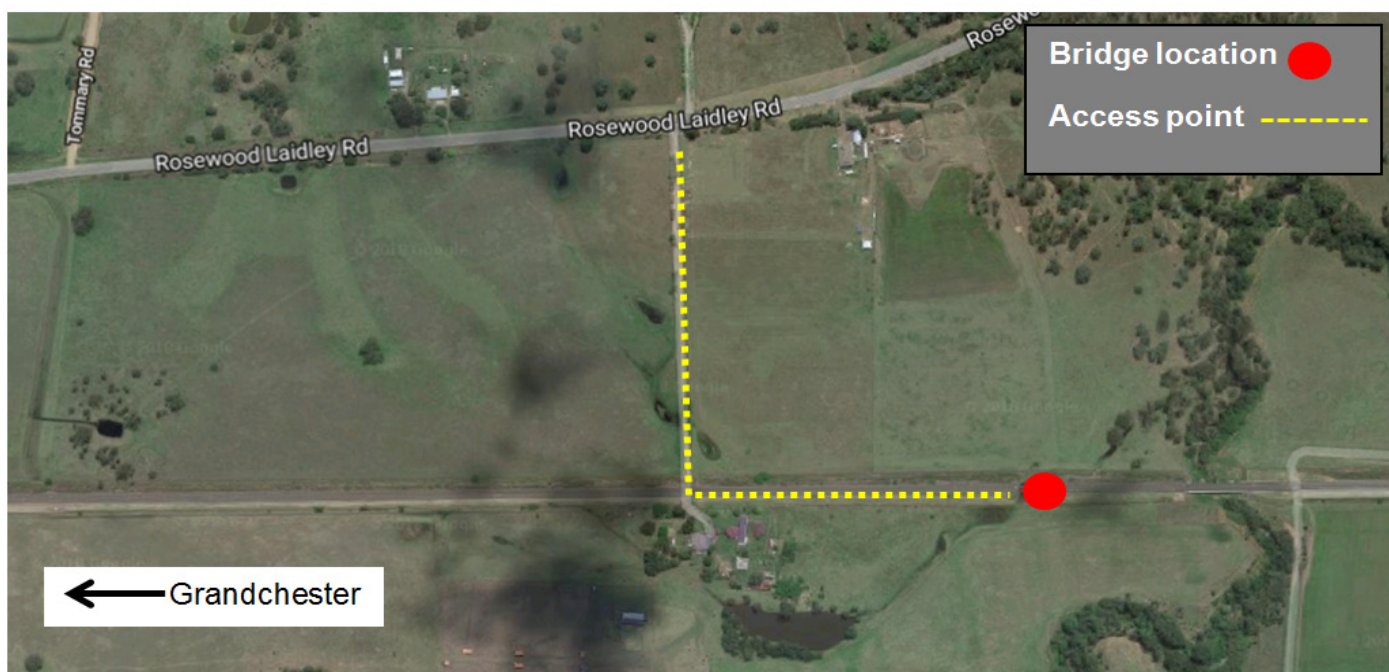
### Overview of work

Location	Dates and hours of work	Type of work and impacts
Rail bridge approximately 2.5km east of Grandchester (see map overleaf)	<b>Wednesday 7 until Saturday 24 November 2018</b> 6.30am to 6.30pm (Monday to Saturday)	Site preparation works including delivery of materials, installation of bridge supports and extension of the piling rig pad.  This includes the use of: <ul style="list-style-type: none"> <li>heavy machinery including a crane, excavator and trucks with reversing beepers and flashing lights.</li> </ul>
	<b>2am Saturday 24 to 6pm Monday 26 November 2018.</b> Continuous works.	Removal of existing rail, ballast and bridge and installation of a new structure along with replacement of rail and ballast.  This includes the use of: <ul style="list-style-type: none"> <li>heavy machinery including a crane and trucks with reversing beepers and flashing lights</li> <li>hand tools including welding equipment</li> <li>a generator and lighting towers.</li> </ul>

Every effort will be made to carry out these works with respect for our valued neighbours and we apologise for any inconvenience.

For more information, please call **13 16 17** or email [communityengagement@qr.com.au](mailto:communityengagement@qr.com.au)

# Works location



Map data © 2018 Google