

Bundamba station accessibility upgrade



PROJECT UPDATE – OCTOBER 2023

The Bundamba station accessibility upgrade is part of the State Government's ongoing investment to upgrade stations to make them accessible for everyone.

Project status

Early works are progressing well with site establishment, shelter removal, bike locker relocation, vacuum and pile testing, and overhead works complete.

Upcoming works (see map)

Customers and the local community can expect to see the following activities in late-2023:

- installation of the new temporary footbridge across the rail line
- foundation and construction works for the new lifts and footbridge
- signalling relocation works
- platform and piling works.

Works will generally take place 6am to 6pm Monday to Saturday, unless notified.

Out of hours works - from midnight on Friday 20 October through to 8pm on Sunday 22 October.

We will install the new footbridge and do piling and signalling works during this planned track closure.

While the station will remain open until January 2024, the subway and some footpaths will close temporarily. Some work areas will be also be fenced off for safety.

Station closure (early January to late-2024)

To fast-track construction and deliver this upgrade as safely as possible, the station will close from January 2024. During this time, trains will run express through the station. Customers can look forward to the station reopening in the second half of 2024.

Queensland Rail recently asked the community to complete a survey to help us plan alternative

transport during the closure to ensure customers can still get where they need to go.

Thank you for your patience and to everyone who completed the survey. We are collating your feedback and will update the community on the alternative transport plan shortly.

About the project

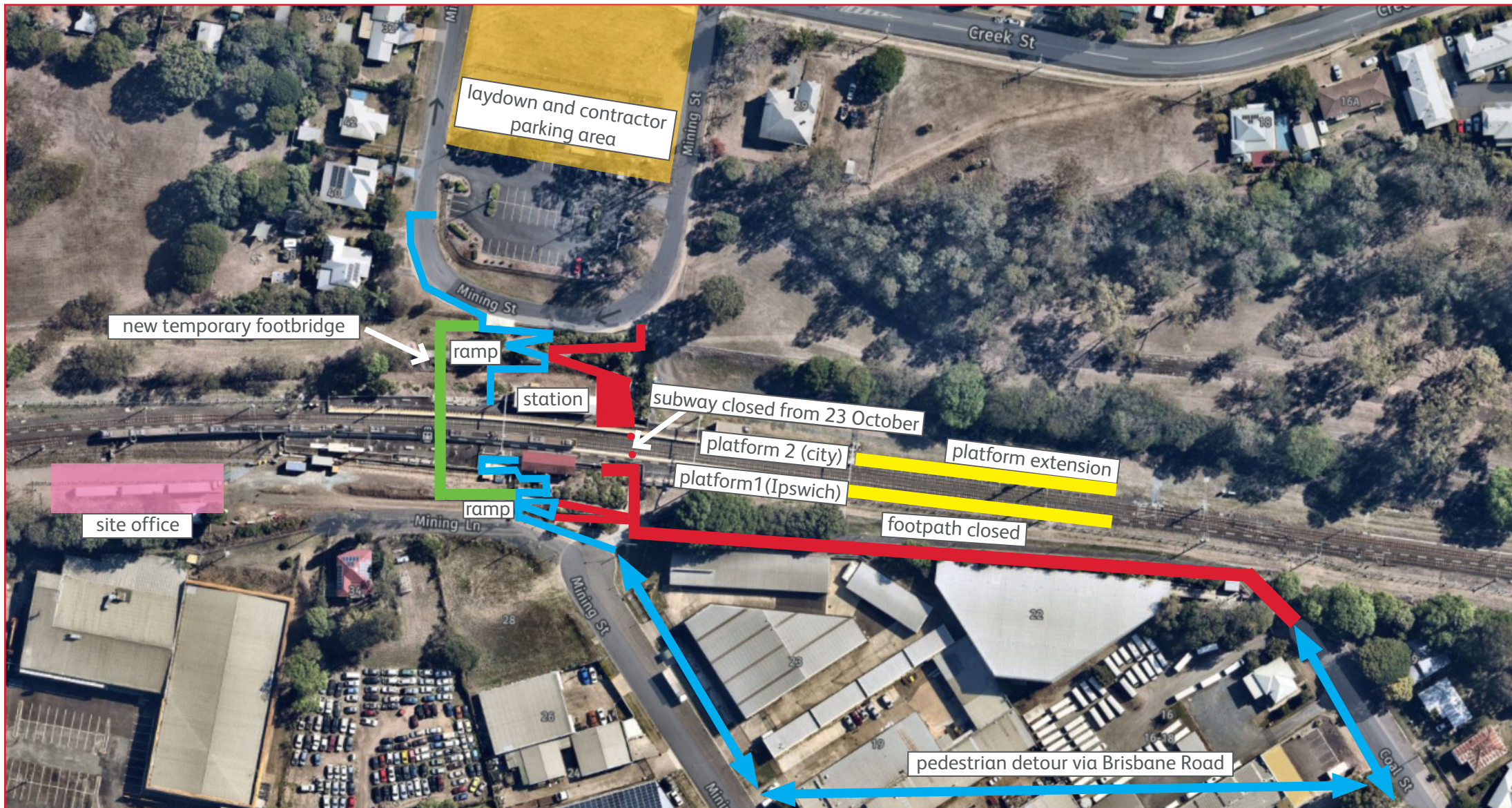
Key features of the upgrade include:

- a new footbridge with lift access
- improved accessible parking, including kiss 'n' ride area
- full-length, high-level platforms
- upgraded hearing augmentation loops and tactile ground surface indicators
- upgraded security cameras and lighting
- new wayfinding and platform signage
- accessible toilets and ticket window
- new bicycle storage facility
- improved seating and extended platform shelters
- improved station building and facilities.

Contact us

- Phone: 1800 722 203 (free call)
- Email: stationsupgrade@qr.com.au
- Website: queenslandrail.com.au





- New pedestrian overpass
 - Footpath/subway closed
- Pedestrian access
 - Works layout/parking
- Platform extension
 - Site office