

Bundamba station accessibility upgrade



PROJECT UPDATE – JANUARY 2024

The Bundamba station accessibility upgrade is part of the State Government's ongoing investment to upgrade stations to make them accessible for everyone.

Station closure

Bundamba station is now closed and is expected to reopen in the second half of 2024.

Train services are running **express in both directions between Ebbw Vale and Booval stations. Trains will not stop at Bundamba.**

Transport to and from Bundamba station

An accessible shuttle bus service (Route 501) is running between Booval and Bundamba stations and Bundamba TAFE from Creek Street stops.

Please plan your travel by downloading the MyTranslink app, visiting translink.com.au or by calling [13 12 30](tel:131230).

Upcoming works

Customers and the local community can expect to see the following activities in early-2024:

- foundation and construction works for the **new lifts and footbridge**
- station building improvement works
- platform raising and extension works
- piling and service works
- kiss 'n' ride works near station carpark

Impacts (see map on back)

There will be times when there will be changes to access to resident driveways (station carpark side) between 32 and 40 Mining Street. The footpath across the road from these driveways will be closed for safety during upgrade works.

Please follow traffic control signs and directions.



The new temporary footbridge (above) remains open

Out of hours works - planned track closures

- **19 - 21 January** - from 11pm on Friday 19 January to 6pm on Sunday 21 January
- **10 -12 May 2024** - from 11pm on Friday 10 May to 6pm on Sunday 12 May

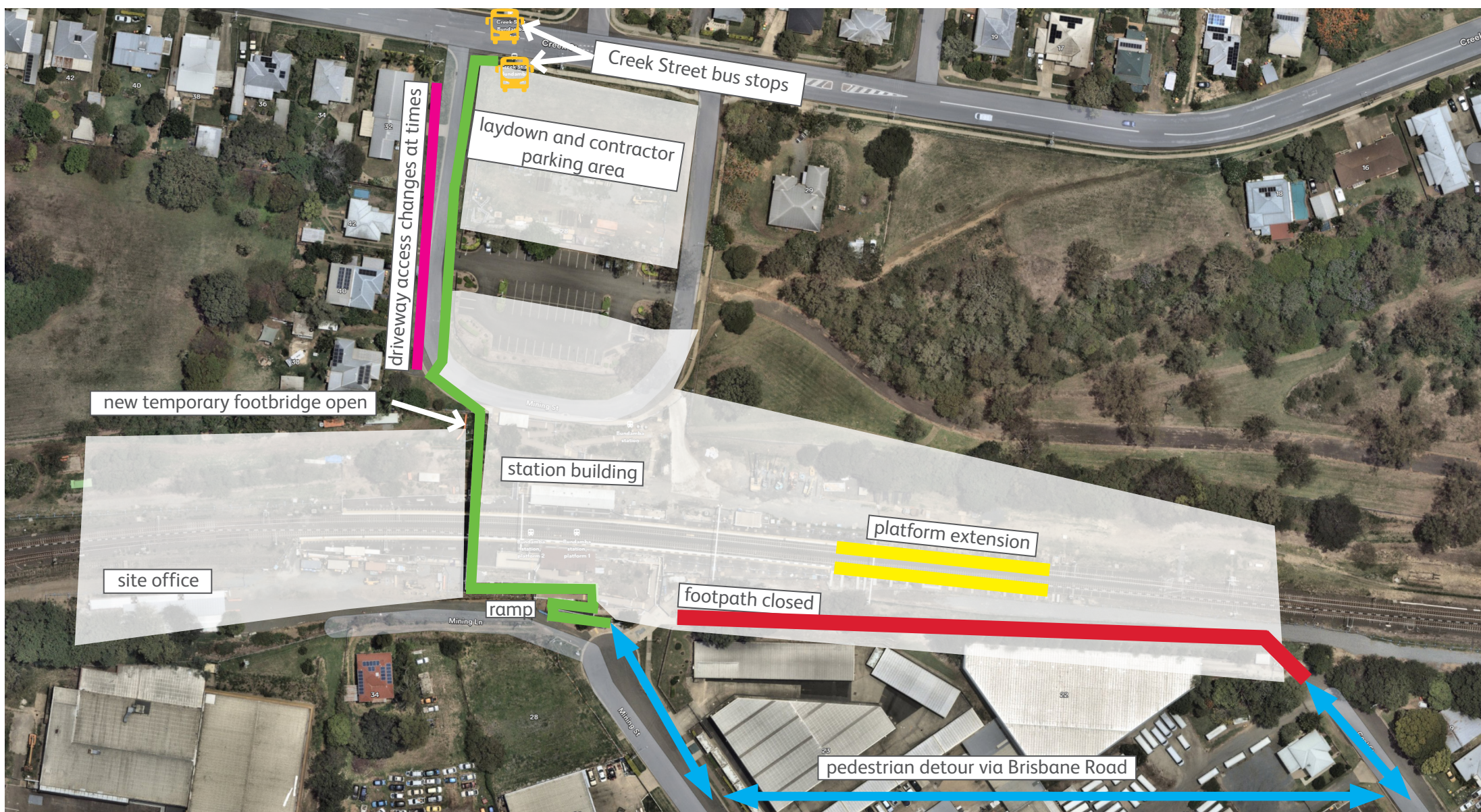
Works will generally take place 6am to 6pm Monday to Saturday, unless notified.

Contact us

- Phone: **1800 722 203** (free call)
- Email: stationsupgrade@qr.com.au
- Website: queenslandrail.com.au



Platform, building, footbridge and lifts works area



- Pedestrian access

Driveway access changes
- Footpath closed

Works area - closed
- Platform extension

Pedestrian detour