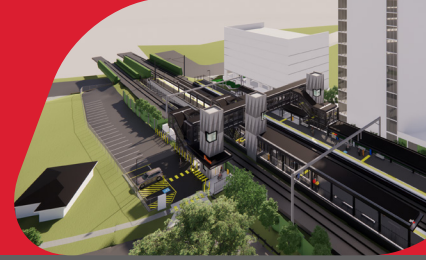


# Buranda station accessibility upgrade



PROJECT UPDATE – FEBRUARY 2024

The Buranda station accessibility upgrade is part of the State Government's ongoing investment to upgrade stations to make them accessible for everyone.

## About the project

Buranda station is being upgraded to make it more accessible, and easier for customers and the community to travel on our network.

The new, modern station will help people in wheelchairs, parents with prams and those travelling with luggage or who are injured, use the station with ease.

## Project status

On Monday 8 January Buranda station, the timber footbridge and the park 'n' ride closed to allow major station upgrade works to commence.

The following works have been carried out recently at Buranda station:

- site establishment works finalised at 13 Arne Street
- installation of safety bollards and flagging on platforms in preparation for future construction activities
- work compound established and security fencing installed (see image below)
- removal and relocation of existing services behind platform 1 retaining wall
- geotechnical and piling design works.

## Upcoming works

Customers and the local community can expect to see the following activities in the coming weeks:

- demolition and removal of the timber footbridge and foundations
- demolition of temporary platforms and shelters
- installation of temporary safety fencing in front of low level copes on both platforms
- construction of piling pads and piling works for new footbridge, lifts and retaining wall on platforms 1 and 2
- civil works for new platform shelter
- raising of the station building
- overhead line infrastructure works.

Works will generally take place between **6am and 6pm Monday to Saturday**, unless notified.

## Upcoming weekend and night works

From **11.59pm Friday 1 March to 4.30am Monday 4 March**, around the clock works will take place during a planned track closure on the Cleveland line.

Works will include:

- demolition and removal of the old timber footbridge and footings
- demolition of temporary platforms and shelters
- overhead line infrastructure works.

Impacts:

- increased personnel, vehicle and truck movements within the station precinct and on Arne and Gillingham Streets
- construction noise and machinery, including the operation of a crane at the end of Arne Street (for footbridge removal), excavators with rock breakers and on track vehicles.

Every effort will be made to carry out these works with respect for our neighbours and customers.

## Contact us

- Phone: **1800 722 203** (free call)
- Email: [stationsupgrade@qr.com.au](mailto:stationsupgrade@qr.com.au)
- Website: [queenslandrail.com.au](http://queenslandrail.com.au)

