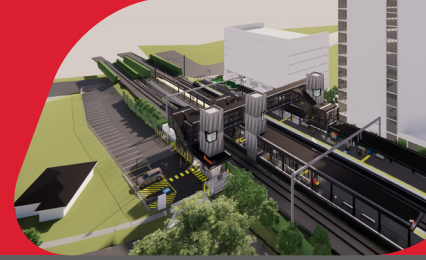


# Buranda station accessibility upgrade



PROJECT UPDATE – MAY 2025

The Buranda station accessibility upgrade is part of Queensland Rail's program to make our stations accessible for everyone.

## About the project

Buranda station is being upgraded to make it more accessible, and easier for customers to travel on our network.

The new, modern station will help people in wheelchairs, parents with prams and those travelling with luggage or who are injured, use the station with ease.

## Project status

As the project draws closer to reopening the focus continues to be on completing the fitout of station services, accessibility and safety features.

Works currently underway include:

- installation of platform lighting and security systems
- painting of assisted boarding points on the platforms
- fitout of station building
- installation of fencing and landscaping
- placement of non-slip surfaces on stairs and footbridge
- installation of Buranda station signage.



## Upcoming works

Some of the activities planned in the coming month include:

- completion of the Arne Street carpark asphalt and line marking
- completion of landscaping
- removal of redundant asphalt pad within the rail corridor
- commissioning of lifts
- continuation of works at station entrances.

## Construction impacts

All works will generally take place between 6am and 6pm Monday to Saturday, unless notified.

Every effort will be made to carry out these works with respect for our neighbours and customers.

Weekend works will occur on Saturday 24 and Sunday 25 May, and Saturday 7 and Sunday 8 June 2025 during planned closures of the inner city and Cleveland lines.

## Contact us

- Phone: **1800 722 203** (free call)
- Email: [stationsupgrade@qr.com.au](mailto:stationsupgrade@qr.com.au)
- Website: [queenslandrail.com.au](http://queenslandrail.com.au)

