



Buranda station accessibility upgrade

Quarterly project update | July 2024

The Buranda station accessibility upgrade is part of the State Government's ongoing investment to upgrade stations to make them accessible for everyone.



Project benefits

Buranda station is being upgraded to make it more accessible, and easier for customers and the community to travel on our network. The new, modern station will help people in wheelchairs, parents with prams and those travelling with luggage or who are injured use the station with ease.



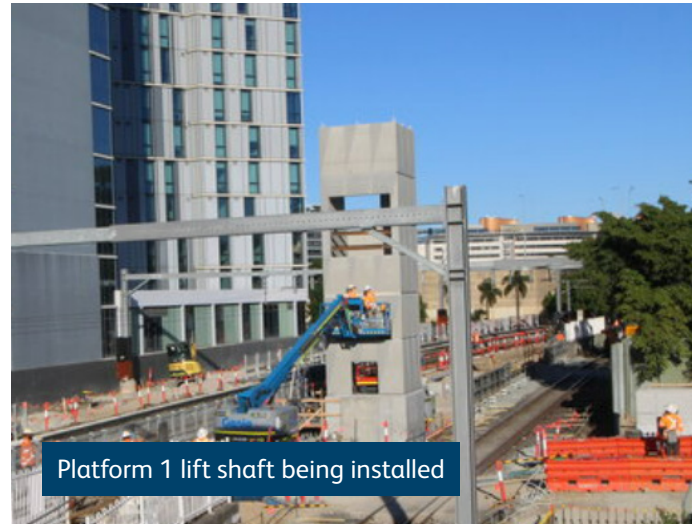
Construction progress

Recent weekend closures of the Cleveland line enabled the project team to work around the clock and make good progress on the installation of precast modules for the platforms and lift shaft.

Works recently completed included the installation of:

- ✓ platform 1 precast platform edge copings
- ✓ platform 2 (city end) 75% precast platform edge copings complete
- ✓ adapta panels on platforms for safe working
- ✓ ground improvements and foundations for footbridge and lifts
- ✓ platform 1 lift shaft panels.





Upcoming works

You can expect to see the following upcoming activities on site:

- installation of footbridge precast columns
- completion of remaining 25% precast platform edge copings on platform 2 (Cleveland end)
- platform 2 shelter footings
- existing station building internal demolition and building raising
- installation of the carpark lift shaft panels.

Works will generally take place between 6am and 6pm Monday to Saturday, unless notified. Every effort will be made to carry out these works with respect for our neighbours and customers.

We appreciate the community's understanding while we work to build you a better station.

More information

Scan the QR code to visit the [project page](#) on our website. For more information, please contact the project team on free call [1800 722 203](tel:1800722203) or email stationsupgrade@qr.com.au.

Follow us on social to stay up to date.

