

Works notification

Buranda



Why?

Queensland Rail will carry out plant relocations within the station precinct and platform works as part of the Buranda station accessibility upgrade.



When?

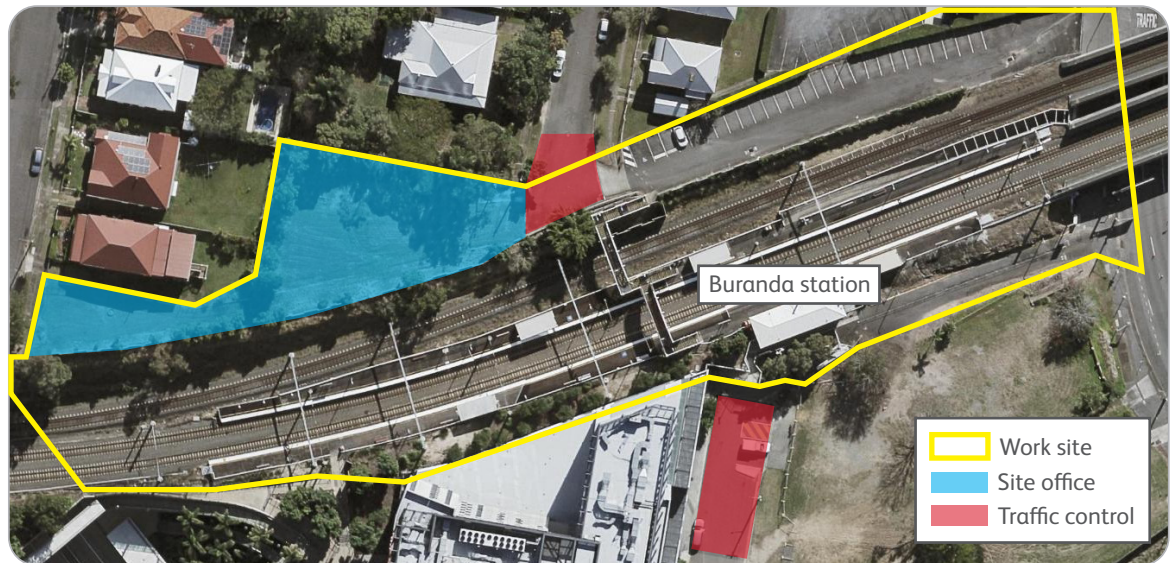
Between **1am and 4am on Wednesday 17 April** plant movements and deliveries will take place on Arne and Gillingham Streets. Platform works will be carried out from **6pm Sunday 21 April to 6am Monday 22 April**.



Where?

Works will occur within the station precinct and on the platforms. Plant will be relocated between Arne and Gillingham Streets to facilitate future upgrade works. Traffic control will be in place on Arne and Gillingham Streets to direct motorists and assist trucks with delivering and relocating equipment safely on site.

There will be increased personnel, vehicle and truck movements in the area during these times, including at the Buranda site offices (on Arne and Faversham Streets).



Map data © 2023 Google



Impacts



Vehicle and plant movements and construction noise



Traffic control, lighting and hand tools in use



Night and weekend works

Every effort will be made to carry out these works with respect for our valued neighbours. We apologise for any inconvenience and thank you for your patience as we work to improve our network.

Works may be subject to change due to weather conditions and operational requirements.

If you would like to receive electronic copies of our works notices, please sign up at queenslandrail.com.au/EmailNotification

For more information, please contact the project team on free call **1800 722 203** or email stationsupgrade@qr.com.au

