

Works notification

Buranda



Why?

Queensland Rail will deliver plant to the Buranda station park 'n' ride, to facilitate future station accessibility upgrade works.



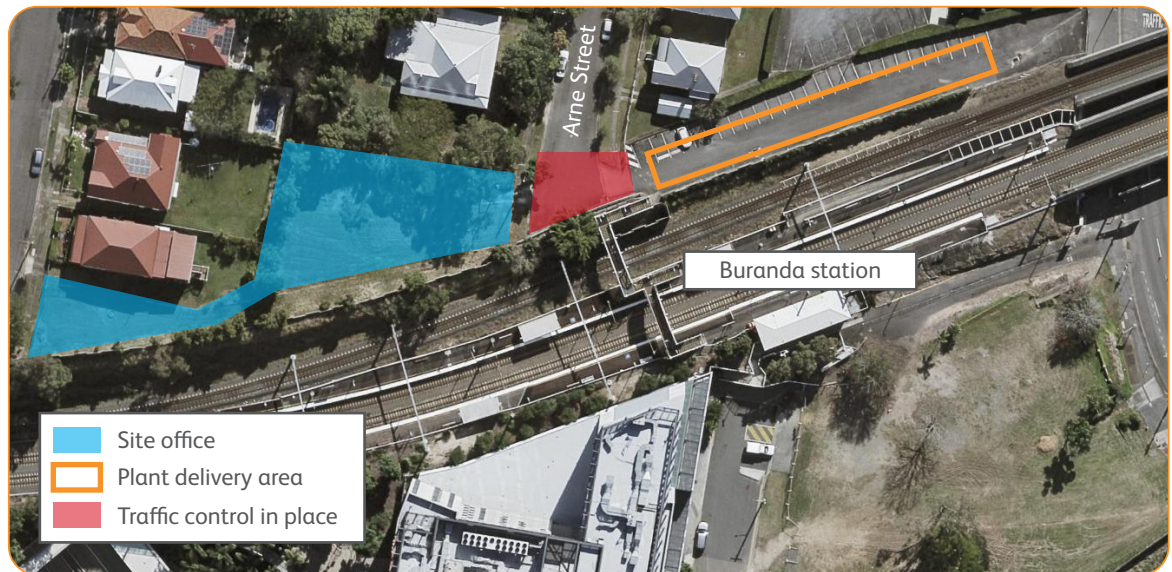
When?

Between 3.30am and 6.30am on Friday 5 April a piling rig and crane will be delivered to the Buranda park 'n' ride.



Where?

Plant will be delivered to the Buranda park 'n' ride via Arne Street, Woolloongabba. Traffic control will be in place to direct motorists and assist trucks with delivering the equipment and machinery to site safely.



Impacts



Trucks, trailer and vehicle movements



Traffic control and lighting



Night works

Every effort will be made to carry out these works with respect for our valued neighbours. We apologise for any inconvenience and thank you for your patience as we work towards building you a better station.

Works may be subject to change due to weather conditions and operational requirements.

If you would like to receive electronic copies of our works notices, please sign up at queenslandrail.com.au/EmailNotification

For more information, please contact the project team on free call **1800 722 203** or email stationsupgrade@qr.com.au

