

Central station upgrade

Building you a better Central



ESCALATOR UPGRADE PROJECT UPDATE – November 2021

Upgrade works to make the facilities at Central station more reliable for our customers has continued in 2021 with the replacement of the escalators between Central station and Anzac Square Arcade commencing in October. Following this package of works, improvement works will continue in the adjacent stairwell.

Construction progress

Works started on 1 October 2021, involving the installation of scaffolding and a temporary roof structure ahead of major works to remove and replace the escalators.

These major works were recently completed and included the removal of the old escalators on Saturday 30 October, and the assembly and craning in of the new escalators on Saturday 13 November.

In the coming weeks, customers and the community can expect to see the following construction activities:

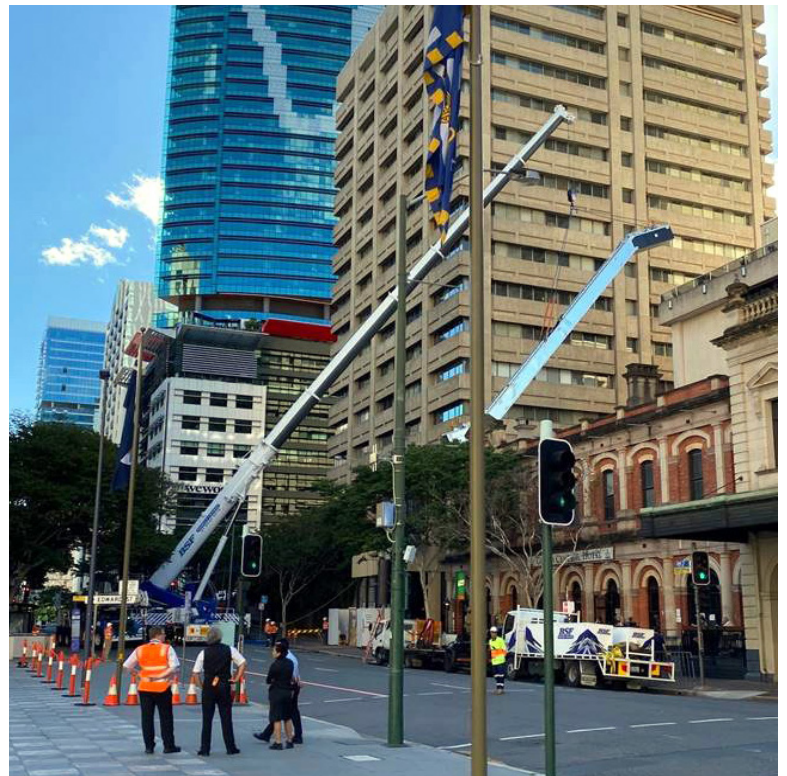
- resintatement of the glass roof over the escalator precinct, as well as the glass facade on Ann Street
- removal of the scaffold and temporary roof structure
- ongoing works behind the hoarding to connect the new escalators and associated components such as the motors.

The station will remain operational throughout the works. While the escalators are out of operation, the adjacent stairs, lift and ramp will all remain open to pedestrians.

Construction impacts may involve:

- noise associated with heavy machinery and hand-held tools
- temporary changes to access paths in and out of the station
- temporary lane closures on Ann Street
- increased presence of construction workers.

Queensland Rail will ensure customers are kept informed of further elements of the upgrade as they are planned to occur.



Out of hours work

From **8pm until 1am the next day on Thursday 18 and Friday 19 November**, works will be carried out to reinstate the glass panels to the roof above the escalators.

On **Sunday 28 November**, works will be carried out on site to reinstate the glass panels on the Ann Street level, and remove the scaffolding and temporary roof structure. Hoarding will then remain in place around the escalators until works are completed in early 2022.

Contact us

For more information or to provide feedback:

- Phone: **1800 401 944** (free call, business hours)
- Email: centralstation@qr.com.au
- Website: www.queenslandrail.com.au/centralupgrade

Thank you for your patience as we work to improve your station.