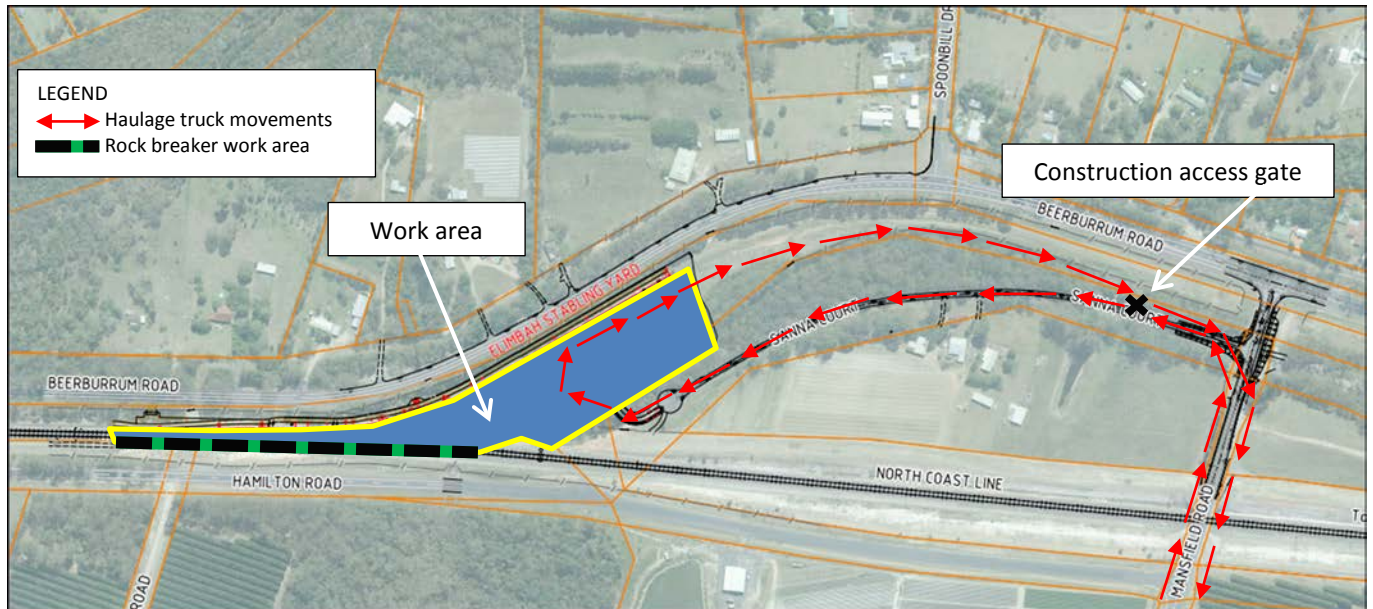


For your information



SEQ Rail Stabling Program - Elimbah Construction Update



From late October until the end of November 2015 various construction activities will be undertaken to continue work on the stabling facility at Elimbah. These will include:

- Removal of vegetation and establishment of mulch stockpiles within the project boundary
- Establishment of erosion and sedimentation controls
- Stripping of topsoil and earthworks to grade and level the construction area
- Transportation of cut material off site using covered haulage trucks
- Delivery of pipe and culverts for the installation of site drainage
- Removal of redundant concrete footings along the existing rail alignment using a rock breaker.

You will notice some changes around your local area including:

- Increased truck and vehicle movements on Beerburrum Road, Mansfield Road, Hamilton Road and Sanna Court
- Temporary heavy vehicle access via the end of Sanna Court to allow haulage vehicles to complete a loading circuit and exit the site safely
- Intermittent use of an excavator with rock breaker attachment to remove redundant concrete footings
- Temporary traffic control will be used to assist with site activities on occasion
- Placement of temporary fencing around construction areas.

Construction work will be carried out between 6.30am and 5.00pm Monday to Saturday. Workers may arrive onsite between 5.30am and 6.30am to prepare for the day's activities.

Every effort will be made to keep disruption to a minimum. We appreciate your patience during the construction period and will continue to update you as work progresses.

Where can I find out more information?

If you have any questions or would like to register for more information, please contact the Project Team on **1800 783 334** (free call) or **stabling@qr.com.au**. Visit **www.queenslandrail.com.au/stabling** anytime for more information and updates.



SEQ Rail Stabling Program - Elimbah Construction Update

Project information

The South East Queensland (SEQ) Stabling Program involves the design and construction of new or additional train stabling facilities in four locations: Robina, Banyo, Elimbah and Woombye.

The \$116 million project was announced on Wednesday, 6 May 2015. The SEQ Stabling Program is part of the broader New Generation Rollingstock project that will see 75 new suburban six-car trains added to the South East Queensland City network, a 30 per cent increase of the current fleet.

Leighton Contractors will design and construct the new stabling facilities to help house 75 new six-car trains which will commence services in mid-2016.