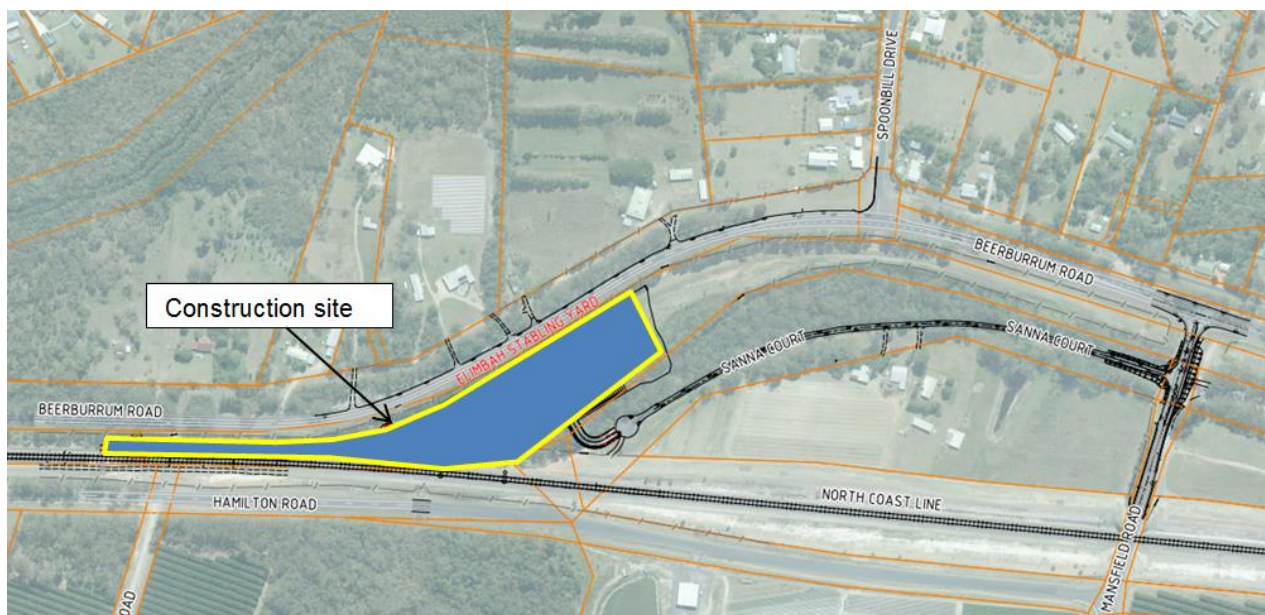


SEQ Rail Stabling Program – Elimbah construction update

CPB Contractors is continuing construction of the Elimbah stabling facility. Throughout July and August 2016 the below activities will be undertaken, weather permitting.



Activities include:

- Earthworks - including placement of capping and ballast
- Laying railway track within the stabling facility
- Installation of drainage, water and sewerage services
- Overhead line equipment (OHLE) and signal works
- Installation of lighting and CCTV poles, as well as, driver platforms
- Installation of the security fence and train gate for the facility.

These activities will include the use of machinery such as excavators, mobile cranes, front-end loaders, generators, scrapers, dozer, grader, pad foot roller, smooth drum roller, vacuum excavation trucks, concrete truck, concrete pump and small power tools such as drills, track welders, saws and hammers.

The project team endeavors to minimise impacts to neighboring residents and businesses, including noise and dust, during construction of the Elimbah stabling facility. We appreciate your patience during the construction period and will continue to update you as work progresses.

Where can I find out more information?

For any queries related to the operation of the facility, please contact Queensland Rail on **1800 783 334** and press 2 (free call) or email stabling@qr.com.au. Visit www.queenslandrail.com.au/stabling anytime for more information and updates.

If you have any construction related questions, please contact CPB Contractors on 1800 783 334 (press 1) or email stabling@qr.com.au.