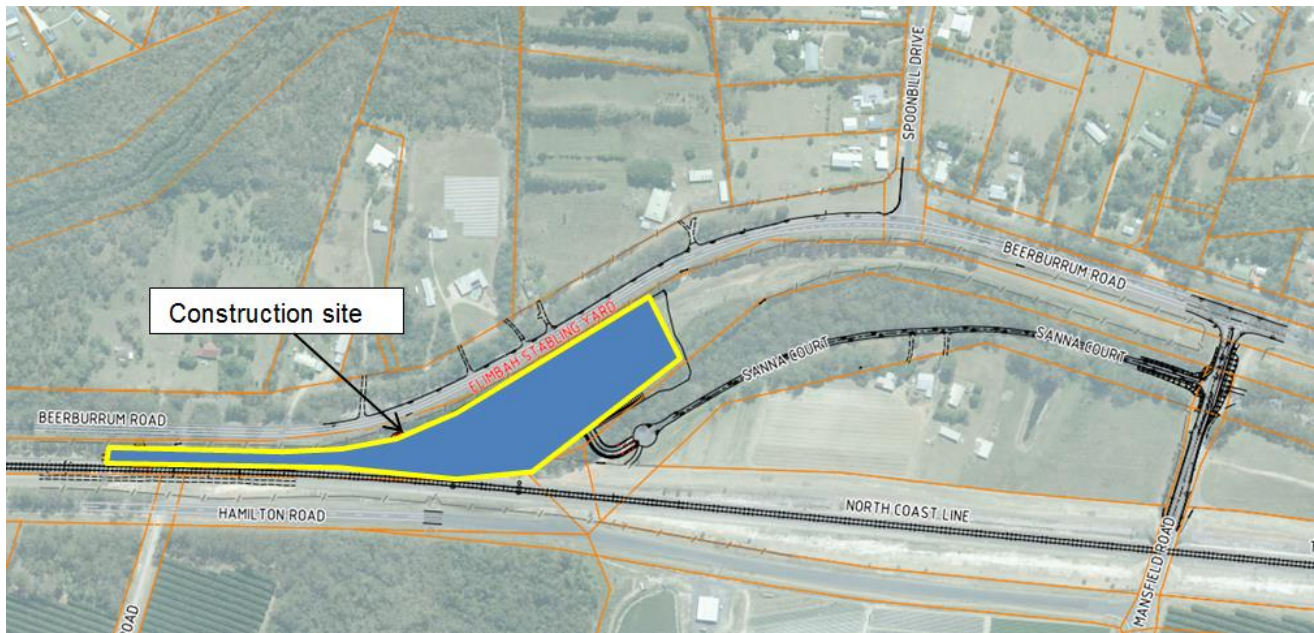


## SEQ Rail Stabling Program – Elimbah construction notice

Queensland Rail and CPB Contractors would like to advise we will be continuing construction activities at the Elimbah stabling facility during the Royal Queensland Show public holiday on **Monday 8 August 2016**. Work hours will be between 6.30am and 5pm.



### Activities include:

- Earthworks including placement of capping and ballast
- Laying railway track within the stabling facility
- Installation of drainage, water and sewerage services
- Overhead line equipment (OHLE) and signal works
- Installation of lighting poles, CCTV poles and driver platforms
- Installation of the security fence and train gate for the facility
- Track resurfacing.

These activities will include the use of machinery such as excavators, mobile cranes, front-end loaders, generators, scrapers, dozer, grader, pad foot roller, smooth drum roller, vacuum excavation trucks, concrete truck, concrete pump and small power tools such as drills, track welders, saws and hammers.

Every effort will be made to keep disruption to a minimum. We appreciate your patience during the construction period and will continue to update you as work progresses.

### Where can I find out more information?

For any queries related to the operation of the facility, please contact Queensland Rail on 1800 783 334 and press 2 (free call) or email [stabling@qr.com.au](mailto:stabling@qr.com.au). Visit [www.queenslandrail.com.au/stabling](http://www.queenslandrail.com.au/stabling) anytime for more information and updates.