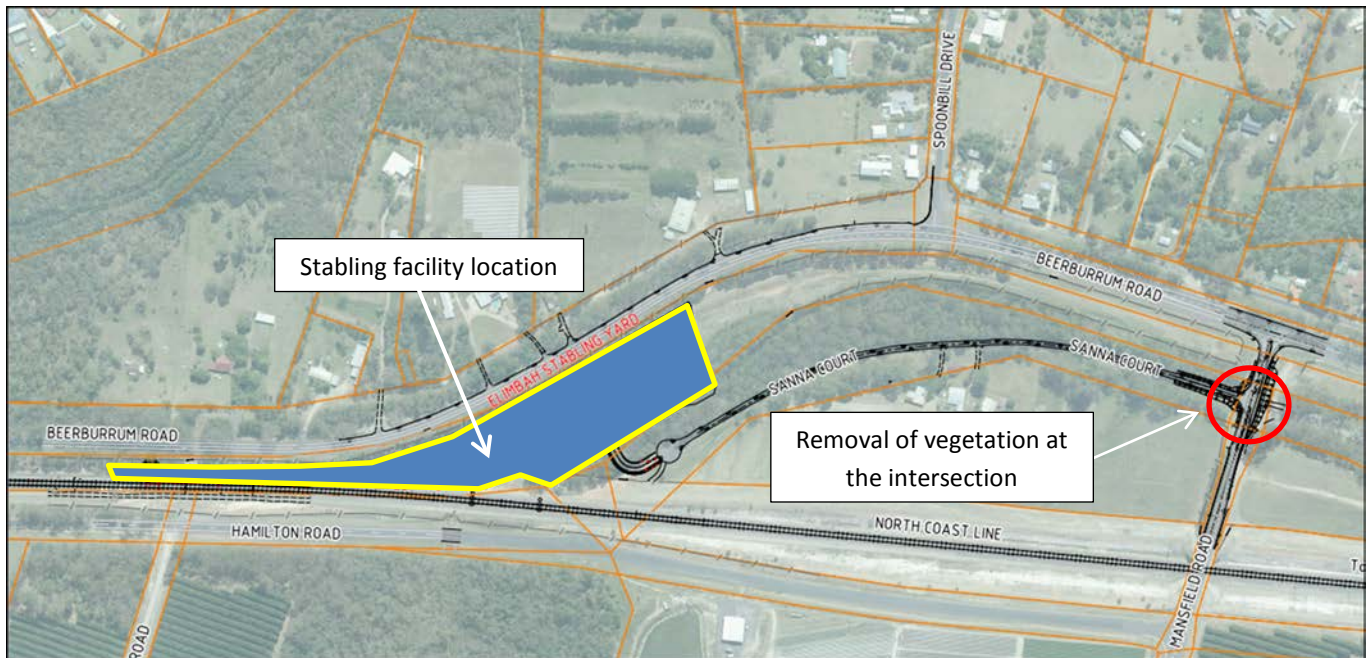


For your information



SEQ Rail Stabling Program - Elimbah Construction update – vegetation removal



As part of the construction of the Elimbah stabling facility, the Sanna Court and Mansfield Road intersection is being upgraded. In order for this upgrade to take place, minor vegetation removal is required within the shoulders of the existing intersection. These works will start in the week commencing Monday, 23 November 2015 and are expected to be completed within two days, weather permitting.

Vegetation removal will be undertaken in accordance with required environmental guidelines. A fauna spotter will be on-site to survey trees prior to clearing.

Traffic control will be on-site during these works to direct motorists and ensure the safety of both workers and motorists. Changed traffic conditions will be in effect, including reduced speed limits and short-term traffic stoppages.

While the project is underway, you will notice some changes around your local area including:

- Increased truck and vehicle movements on Beerburrum Road, Mansfield Road, Hamilton Road and Sanna Court
- Construction work will be carried out between 6.30am and 5.00pm Monday to Saturday. Workers may arrive onsite between 5.30am and 6.30am to prepare for the day's activities.
- Truck and construction vehicle movements in and out of Sanna Court.

Every effort will be made to keep disruption to a minimum. We appreciate your patience during the construction period and will continue to update you as work progresses.

Where can I find out more information?

If you have any questions or would like to register for more information, please contact the Project Team on **1800 783 334** (free call) or **stabling@qr.com.au**. Visit **www.queenslandrail.com.au/stabling** anytime for more information and updates.



SEQ Rail Stabling Program - Elimbah Construction Update

Project information

The South East Queensland (SEQ) Stabling Program involves the design and construction of new or additional train stabling facilities in four locations: Robina, Banyo, Elimbah and Woombye.

The \$116 million project was announced on Wednesday, 6 May 2015. The SEQ Stabling Program is part of the broader New Generation Rollingstock project that will see 75 new suburban six-car trains added to the South East Queensland City network, a 30 per cent increase of the current fleet.

Leighton Contractors will design and construct the new stabling facilities to help house 75 new six-car trains which will commence services in mid-2016.