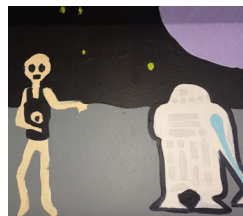


Graceville station accessibility upgrade

Subway mural update – Have your say



New life for Graceville subway art

Have your say

We're keen for the community to have a say on the future of the mural at Graceville station. The film-inspired artwork by internationally-acclaimed artist Guido Van Helten has been there since 2009, but age and wear and tear have taken a toll.

We are seeking your feedback on two options:

Option 1 – Partial restoration

This option involves cleaning, patching and repainting the damaged sections of the existing mural.

Due to the age and damage to parts of the mural, this won't restore it to its former glory but will freshen it up substantially. Given its age, it may still need total replacement in the future.

Option 2 – A new mural

This option involves removing the existing mural, painting the wall in a plain colour and total replacement with a new mural design.

Interested community groups could potentially get involved in its design and development over the coming months.

The timing for either option depends on contractor and artist availability.



Let us know what you think

Tell us your preferred option by contacting Queensland Rail's project team:

- In person at Graceville station – Monday 4 and Wednesday 6 September, 6am – 9am
- Online survey (visit the project webpage and follow the link to the survey)
queenslandrail.com.au/Community/Projects/Pages/Stationaccessibilityupgradeprogram.aspx
- Free call 1800 722 203
- Email stationsupgrade@qr.com.au

Consultation is open until 11 September 2017.