

Timber bridge replacements

March to August 2018

Queensland Rail is replacing 18 rail bridges between Ipswich and Chinchilla with more durable steel structures to improve safety and reliability and reduce maintenance costs.

Moggill Construction has been contracted to undertake the bridge replacements. Works will commence in March to establish temporary access tracks and laydown areas. Some bridges will require piling works to be completed prior to the replacement works. The activities scheduled for your area have been detailed below.

Overview of work

Location	Dates and hours of work	Type of work and impacts
Three bridges between 0 and 2.5km east of Grandchester	March to August 2018 (weather and construction conditions permitting) 6.30am to 6.30pm (Monday to Saturday)	Site establishment, piling, removal of timber bridge and construction of steel bridge.
Two bridges between 1 and 5km west of Rosewood (Refer to map on reverse)	Piling works to occur from late March until early May (approximately two weeks at each bridge location) Continuous works to replace bridges during four day planned track closures in mid-June and early August.	<ul style="list-style-type: none"> • Heavy machinery including piling rig, crane and trucks with reversing beepers and flashing lights • Access to these bridges has been shown on the map overleaf.

Every effort will be made to carry out these works with minimal disruption and we thank you for your cooperation during these works.

For further information, please contact the Customer Feedback Team on **13 16 17** (during business hours) or email communityengagement@qr.com.au

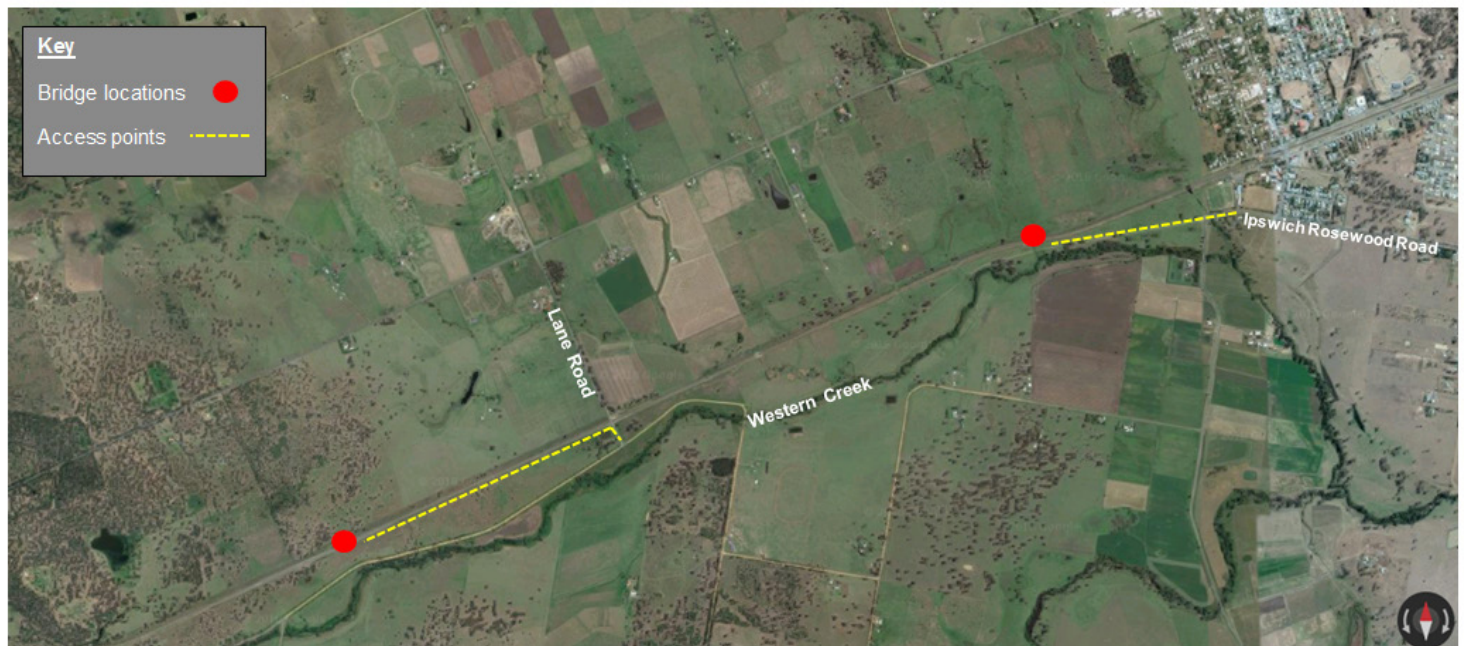
Bridge locations and access points

Grandchester



Map data © 2018 Google

Rosewood



Map data © 2018 Google