

# Temporary carpark and footbridge closure

## From Saturday 1 June to Monday 3 June

From 4am Saturday 1 June to 6am Monday 3 June the station carpark and footbridge will be temporarily closed to facilitate major station upgrade works during the planned track closure.

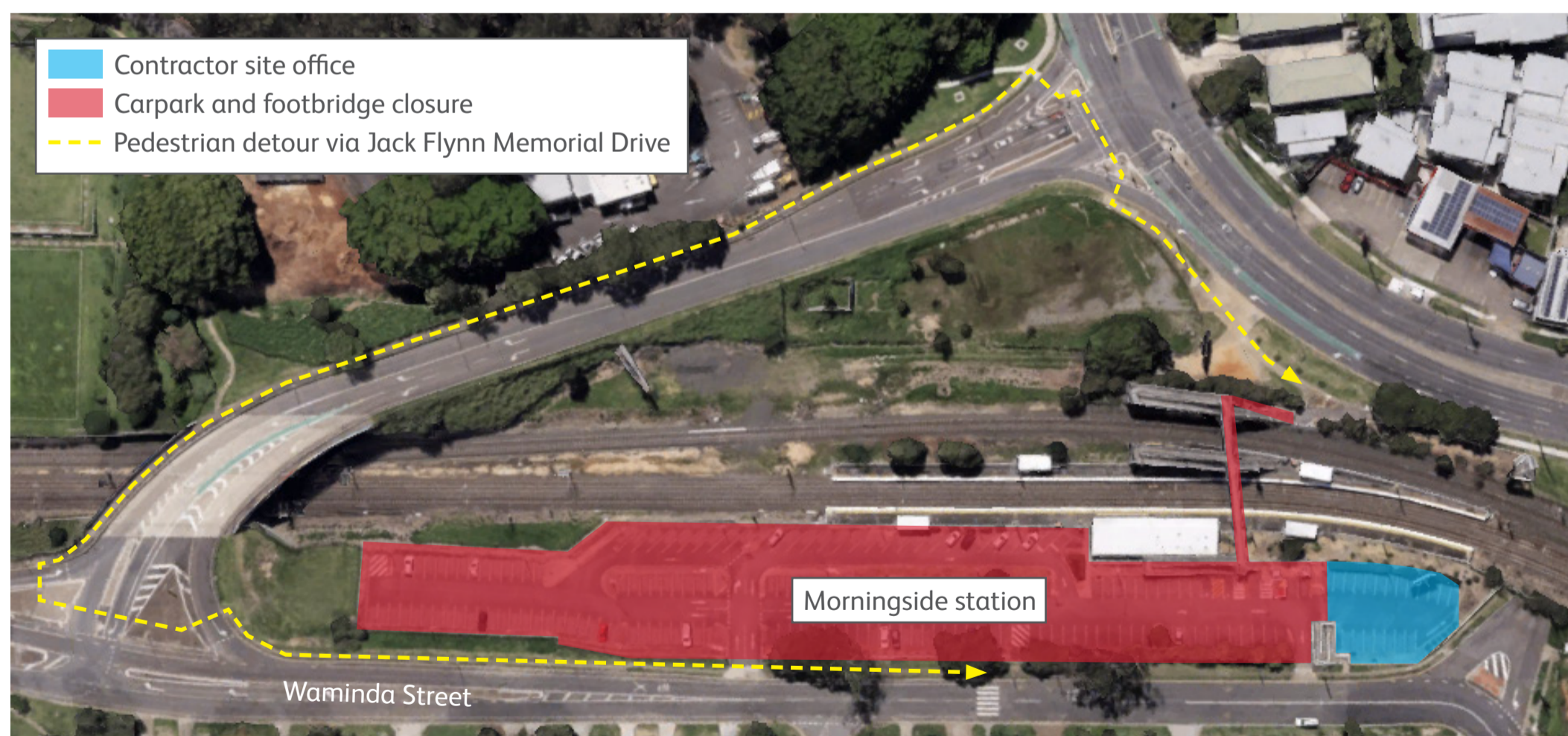
For access between Wynnum Road and Waminda Street, please use the pedestrian diversion via Jack Flynn Memorial Drive to safely cross the rail corridor (approximately 8 minute walk/500 metres).

During the planned track closure, rail replacement buses will service Morningside station. You can catch a rail replacement bus service from stop 25 on Wynnum Road (located outside the station). Shuttle bus 237 will continue to operate if you want to travel to Cannon Hill station.

If you are travelling towards the city, you can also catch bus routes 227, 235, P216, P228 or P236 from stop 25.

Please follow the direction of traffic controllers in place during this time.

We appreciate your patience while we work towards building you a better station.



For more information, please contact the project team on free call [1800 722 203](tel:1800722203) or email [stationsupgrade@qr.com.au](mailto:stationsupgrade@qr.com.au)