

Temporary lift outage

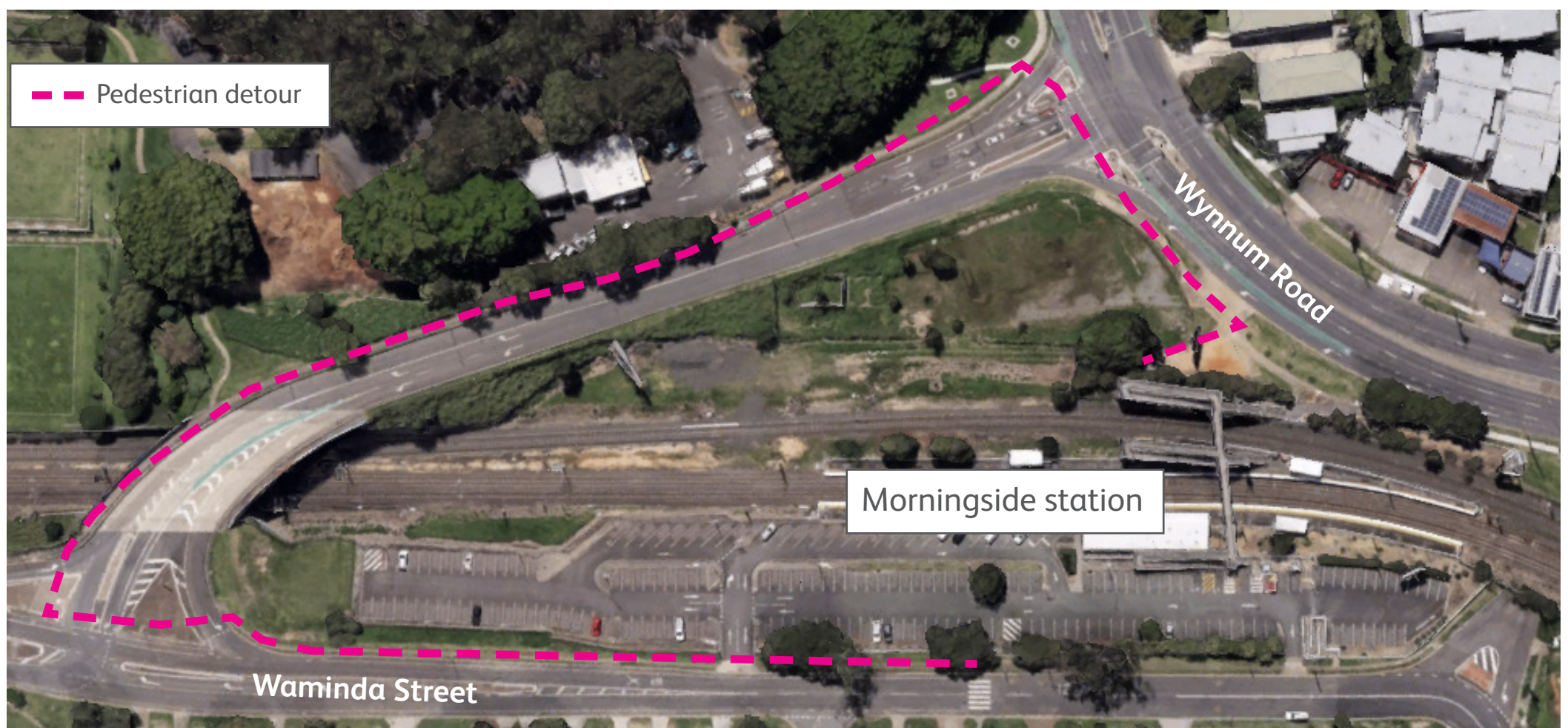
Queensland Rail will undertake maintenance of the lifts at Morningside station due to recent lift failure issues.

All station lifts will be unavailable between **8:30am and 2:30pm each day from Monday 19 to Friday 30 May.**

If you are unable to use the stairs during this time, please detour using the footpath around Jack Flynn Memorial Drive shown in the map below.

Should you require accessibility assistance for travel please talk with our station staff.

We apologise for any inconvenience.



For more information, please contact the project team on free call **1800 722 203** or email stationsupgrade@qr.com.au