

Morningside station is open

Here's how you can access the platforms

While the station is open for use, we're still finalising some accessibility features including completing the lift access from Wynnum Road.

To access the platforms, please use the footbridge across the rail corridor and follow the signs via Waminda Street, to platform 2 and the stairs or lift to platform 1.

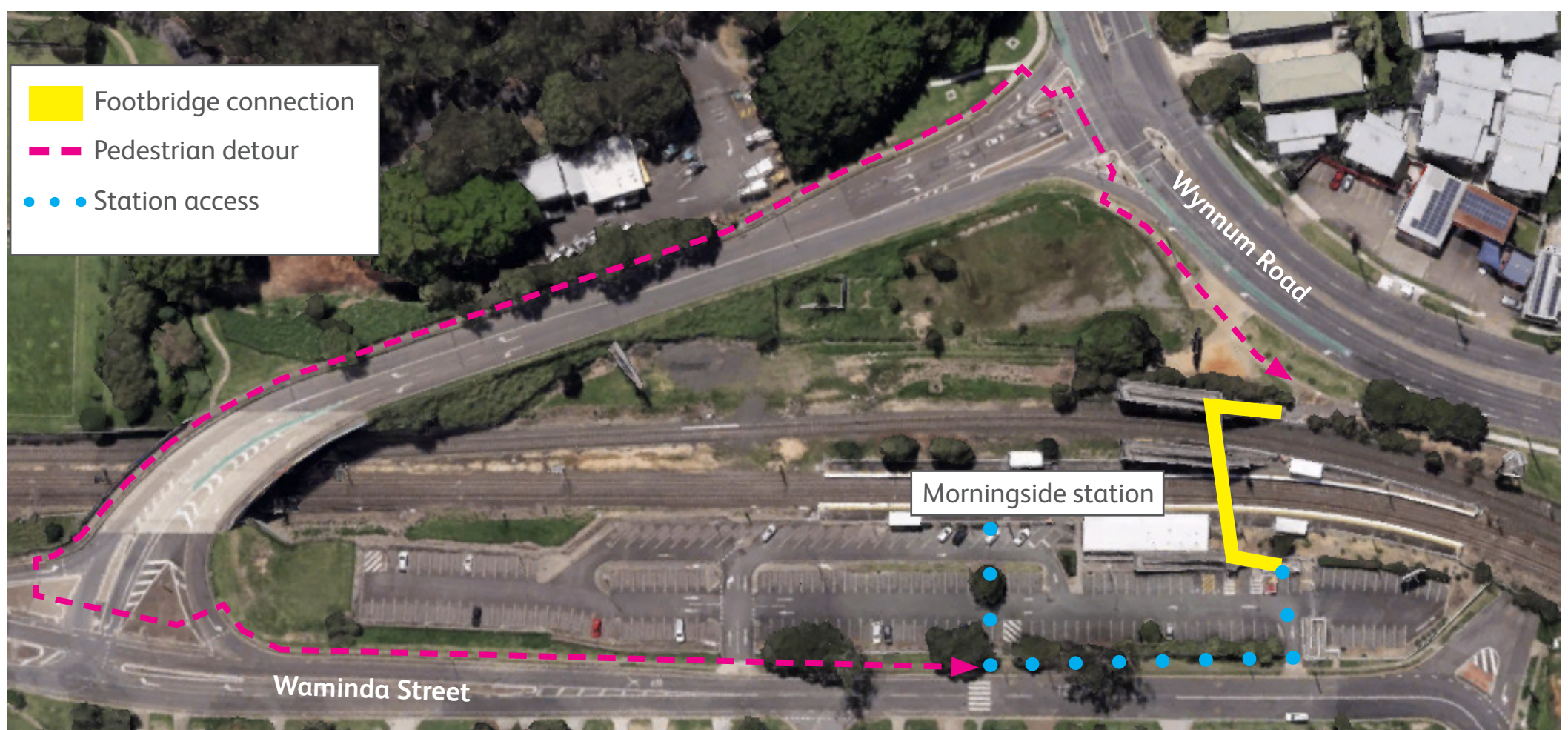
Alternatively, please follow the detour as indicated below via Jack Flynn Memorial Drive. Catching urban bus services may be a better option for you.

If you need accessibility support please send a text message to 0428 774 636 (text only) with the details of:

- the time you are travelling
- your start and end stations
- the help you need.

One of our team members will respond via text message to assist you.

Thank you for your patience while we work towards finalising your new station.



For more information, please contact the project team on free call **1800 722 203** or email stationsupgrade@qr.com.au