

# Works notification

## Morningside



Why?

Queensland Rail will carry out overhead line work at Morningside station, to assist with the upcoming station upgrade.



When?

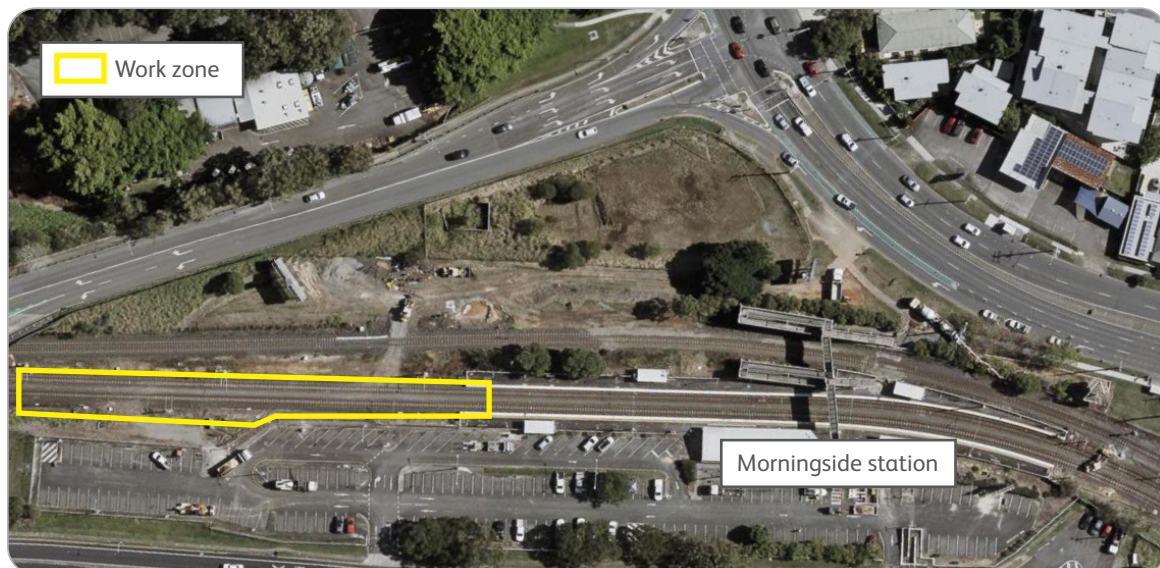
Works will occur from:

- 9am to 4am the next day on Tuesday 24 October and Wednesday 25 October (over two nights)
- 6am Saturday 11 November to 6pm Sunday 12 November - around the clock works during a scheduled track closure.



Where?

Works will be occurring at Morningside station.



Impacts



Machinery and construction noise



On track vehicles



Out of hours and weekend works

Every effort will be made to carry out these works with respect for our valued neighbours. We apologise for any inconvenience and thank you for your patience as we work to improve our network.

Works may be subject to change due to weather conditions and operational requirements.

If you would like to receive electronic copies of our works notices, please sign up at [queenslandrail.com.au/EmailNotification](https://queenslandrail.com.au/EmailNotification)

For more information, please contact the project team on free call **1800 722 203** or email [stationsupgrade@qr.com.au](mailto:stationsupgrade@qr.com.au)

