

# Works notification

## Morningside



### Why?

Queensland Rail will carry out weekend works at Morningside station during planned closures of the inner city and Cleveland lines. Works include resurfacing the carpark driveway at the Waminda Street park 'n' ride, undertaking confined space work in the stormwater manholes within the carpark area and station rectification works.



### When?

Works will occur:

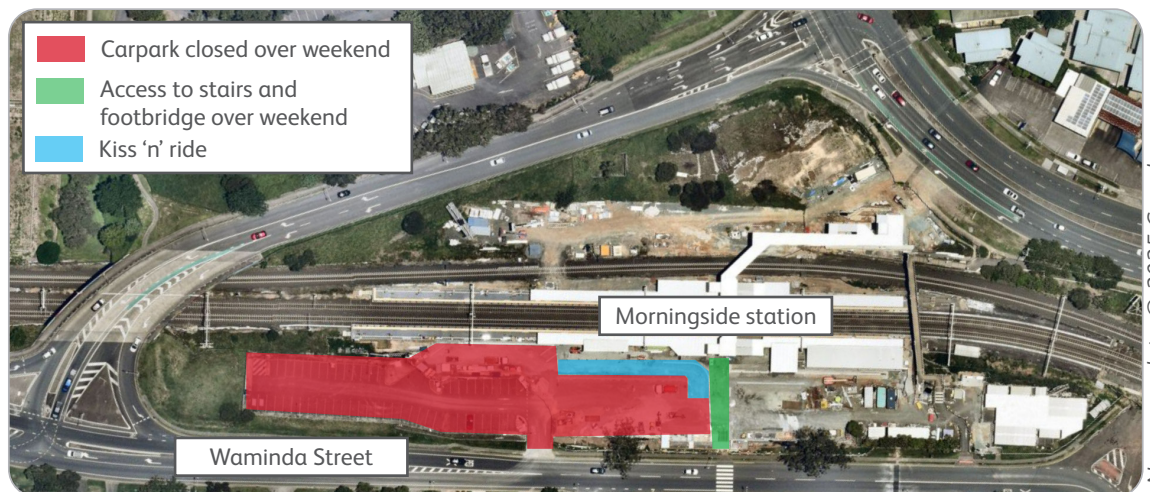
- from 6am to 6pm each day on Saturday 24 and Sunday 25 May
- from 9am and 3pm each day on Monday 26 and Tuesday 27 May
- from 6am to 6pm each day on Saturday 7 and Sunday 8 June.



### Where?

Works will be occurring in Morningside station carpark. The carpark will be closed on the weekend of 24 and 25 May and 7 and 8 June. The kiss 'n' ride will be temporarily closed between 9am and 3pm each day on Monday 26 and Tuesday 27 May.

The stairs and footbridge will remain open throughout the weekend for cross corridor access.



Nearmap data © 2025 Google



### Impacts



Trucks, machinery and construction noise



Weekend carpark closure



Weekend and week day works

Every effort will be made to carry out these works with respect for our valued neighbours. We apologise for any inconvenience and thank you for your patience as we work finalise your station upgrades.

Works may be subject to change due to weather conditions and operational requirements.

If you would like to receive electronic copies of our works notices, please sign up at [queenslandrail.com.au/EmailNotification](https://queenslandrail.com.au/EmailNotification)

For more information, please contact the project team on free call **1800 722 203** or email [stationsupgrade@qr.com.au](mailto:stationsupgrade@qr.com.au)

