

Auchenflower station accessibility upgrade



PROJECT UPDATE – FEBRUARY 2022

The Auchenflower station accessibility upgrade is part of the State Government's ongoing investment of more than \$500 million to upgrade stations across the South East Queensland network, making them accessible for all customers.

Project progress

Works recently undertaken at Auchenflower include:

- continuing footbridge and staircase works
- continuing platform works and lift installation
- works in the old station building/concourse in preparation for demolition
- establishment of a temporary ticket office (corner Auchenflower Terrace and Ridley Street)
- partial raising and paving of platform 2/3 (pictured)
- temporary changes to pedestrian access through the station precinct.

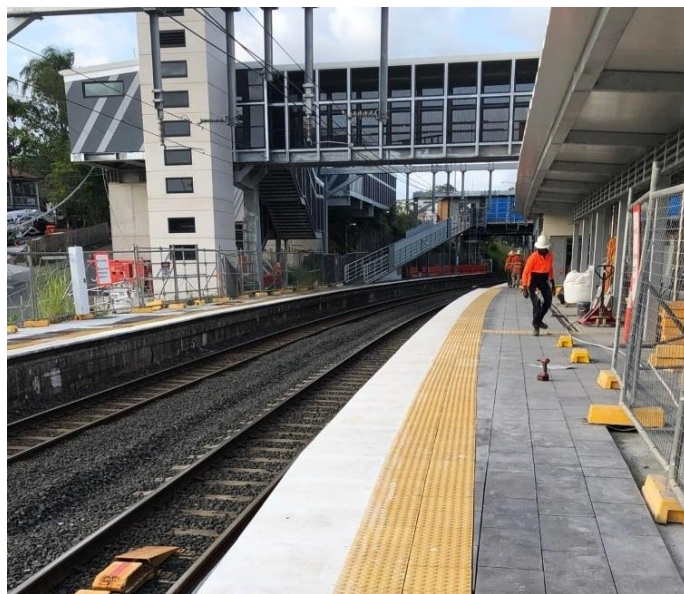
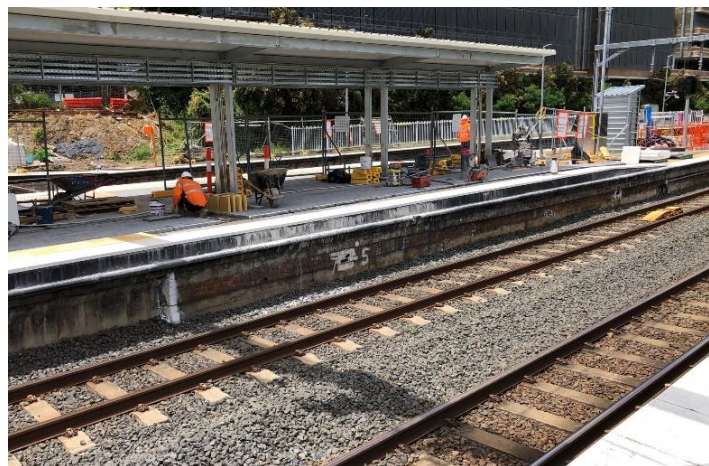
Upcoming works

In the coming weeks, customers and the community can expect to see the following activities:

- demolition works in preparation of old station building removal
- setting up of a large crane to remove old building (during track closure, 19 and 20 March)
- fit-out of new footbridge, walkway and ticket office (ongoing)
- platform raising (platform 4)
- new entrance works (Auchenflower Terrace and Lang Parade).

Auchenflower Terrace will be temporarily closed from Saturday 5 March to Saturday 2 April to enable the safe establishment, operation and demobilisation of a large crane to remove the old station building.

Please take care around the work zones.



Construction impacts

During works, construction activities may involve:

- changed parking and traffic conditions for safety
- noise associated with heavy machinery
- temporary changes to access paths throughout the station precinct and surrounding areas
- relocated ticketing equipment and platform facilities
- increased vehicle movements near works
- mobile lighting towers for night works.

Normal working hours are 6.30am to 6.30pm, Monday to Saturday.

The local community will be given advance notification of construction activities likely to cause impacts, including after hours work (nights, Sundays and public holidays, if required).

Thank you for your patience and cooperation as we build you a better Auchenflower station.

Contact us

For more information, to provide feedback or to be added to the project's opt-in distribution list for email updates:

- Phone: **1800 722 203** (free call)
- Email: **stationsupgrade@qr.com.au**
- Website: **queenslandrail.com.au**