

Thompson Road carpark closure

Progressively from early June 2020

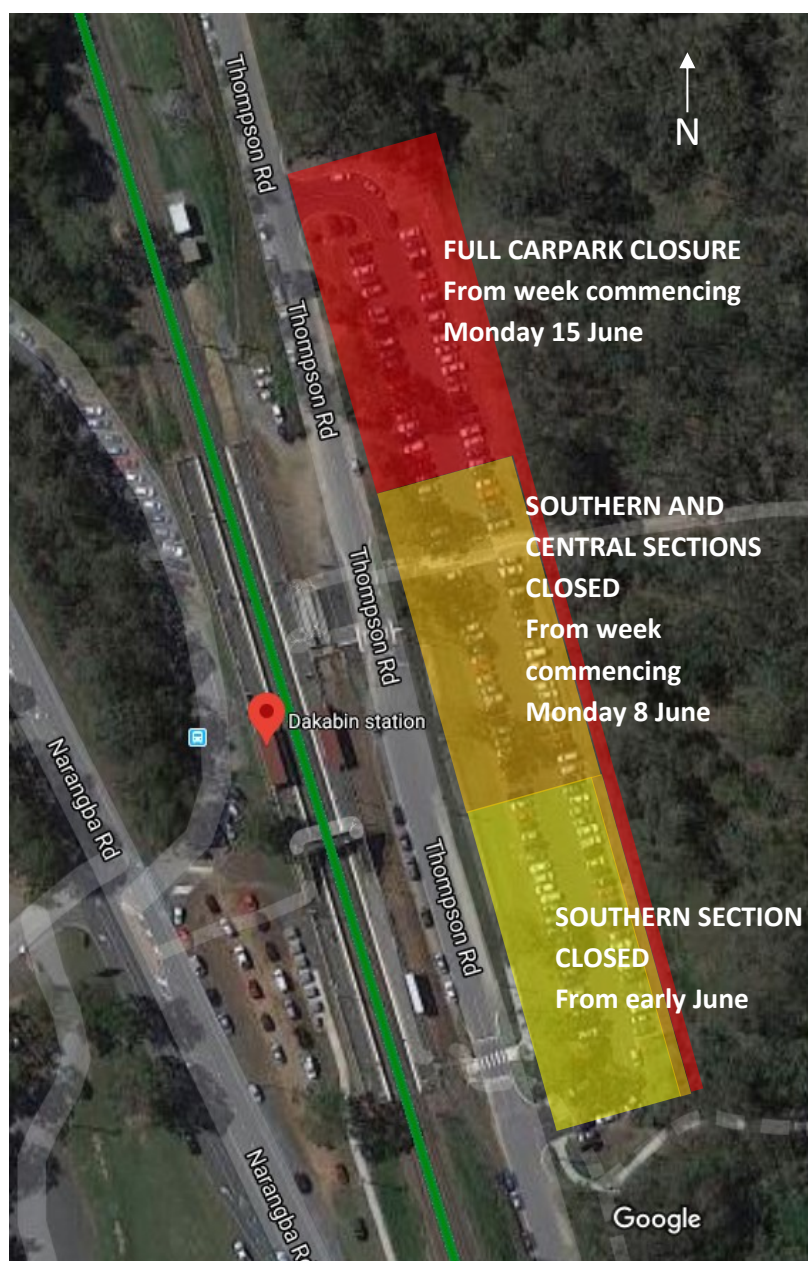
To enable construction of the station's new multi-storey carpark, the Thompson Road carpark will **close progressively from early June 2020** and remain closed for the duration of works.

In partnership with Queensland Rail, Moreton Bay Regional Council has made available 150 weekday parking spaces in nearby Bob Brock Park.

While this temporary arrangement will help alleviate some customer parking impacts during construction, customers are encouraged to consider travelling from other stations with greater parking capacity, where possible.

We apologise for any inconvenience and thank you for your cooperation while we build you a better Dakabin station.

For more information, contact the project team on free call **1800 722 203** or email **stationsupgrade@qr.com.au**



Map data © Google 2020