

# East Ipswich station accessibility upgrade



PROJECT UPDATE – JULY 2021

The East Ipswich station accessibility upgrade is part of the State Government's ongoing investment of more than \$500 million to upgrade stations across the South East Queensland network, making them accessible for all customers.

## Project progress

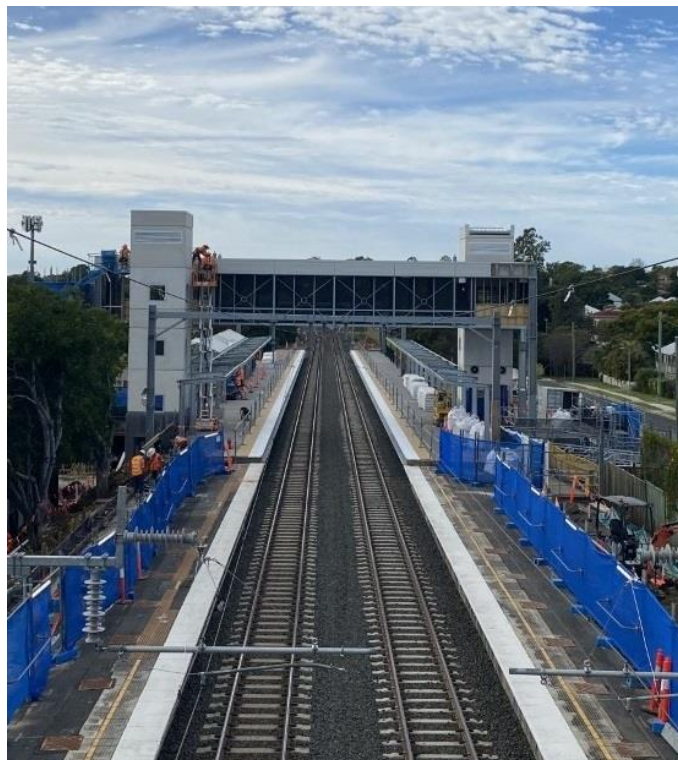
The following works have been undertaken recently at East Ipswich:

- raising sections of existing platform 2
- restoration and reinstallation of heritage shelter (in new location)
- installation of stairs to new footbridge
- lift installation (ongoing).

## Upcoming works

In the coming weeks customers and the community can expect to see the following activities:

- raising sections of existing platform 1 (during scheduled track closure weekend 17 and 18 July)
- painting, paving and tiling
- ongoing lift installation
- installation of security screens – footbridge and stairs
- ongoing stormwater and sewerage works
- restoration and reinstallation of heritage shelter (in new location)
- entrance ramp works – Coronation Street.



## Construction impacts

During works, construction activities may involve:

- changed parking and traffic conditions for safety
- noise associated with heavy machinery
- temporary changes to access paths throughout the station precinct and surrounding areas
- increased vehicle movements near works
- mobile lighting towers for night works.

Normal working hours are 6.30am to 6.30pm, Monday to Saturday.

The local community will be given advance notification of construction activities likely to cause impacts, including after hours work (nights, Sundays and public holidays, if required).

Thank you for your patience and cooperation as we build you a better East Ipswich station.

## Contact us

For more information, to provide feedback or to be added to the project's opt-in distribution list for email updates:

- Phone: **1800 722 203** (free call)
- Email: **stationsupgrade@qr.com.au**
- Website: **queenslandrail.com.au**

