

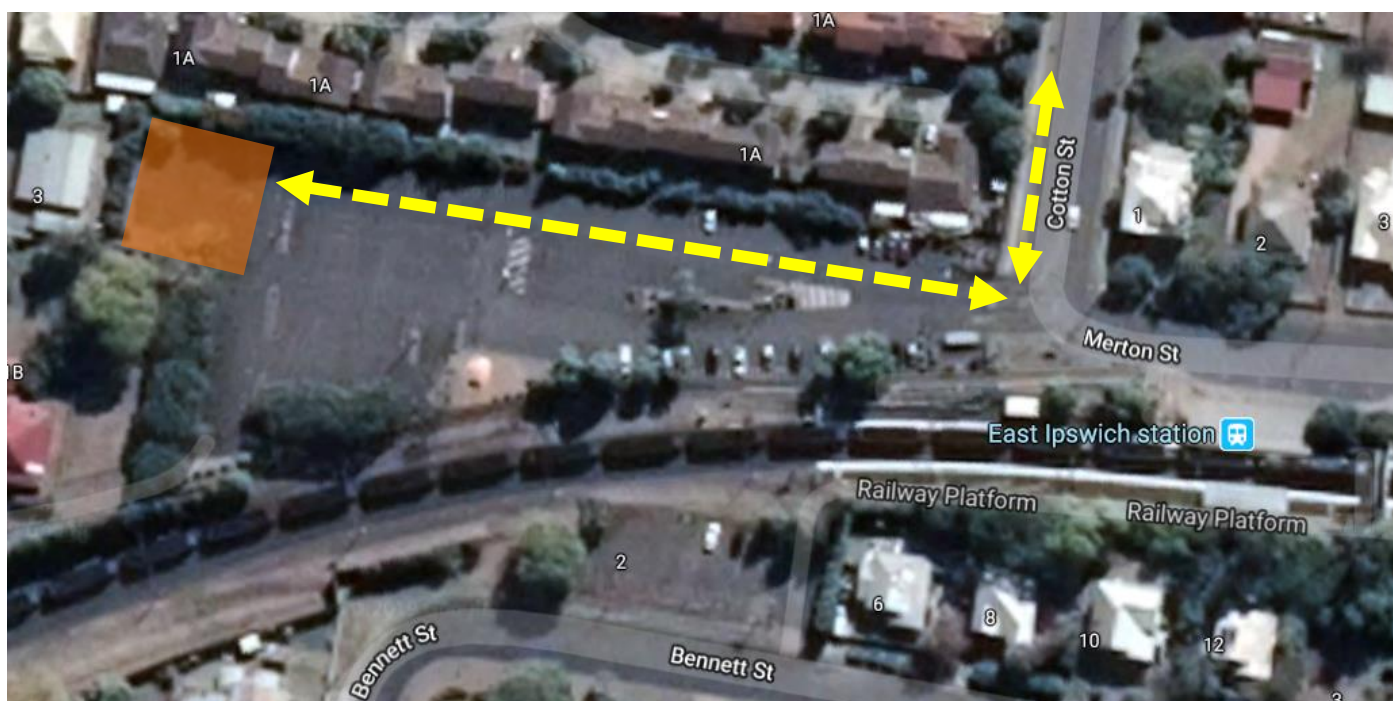
Temporary carpark changes

Monday 6 April to late May 2020


To support preliminary works for the East Ipswich station accessibility upgrade, a project compound and laydown area will be established at the western end of the station's main carpark.


Approximately 20 spaces will be temporarily unavailable from Monday 6 April to late May 2020, weather and construction conditions permitting.

Equipment and materials, including ballast (rock), will also be stored at this location from early April until 11 May 2020.



Map data ©2019 Google

 Section of carpark closed until late May 2020

 Truck route eg. deliveries

The East Ipswich station accessibility upgrade is part of the State Government's \$357 million investment to upgrade stations across the South East Queensland network, making them accessible for all customers.

For more information, please contact the project's community team during business hours on **1800 722 203** (free call) or email stationsupgrade@qr.com.au