

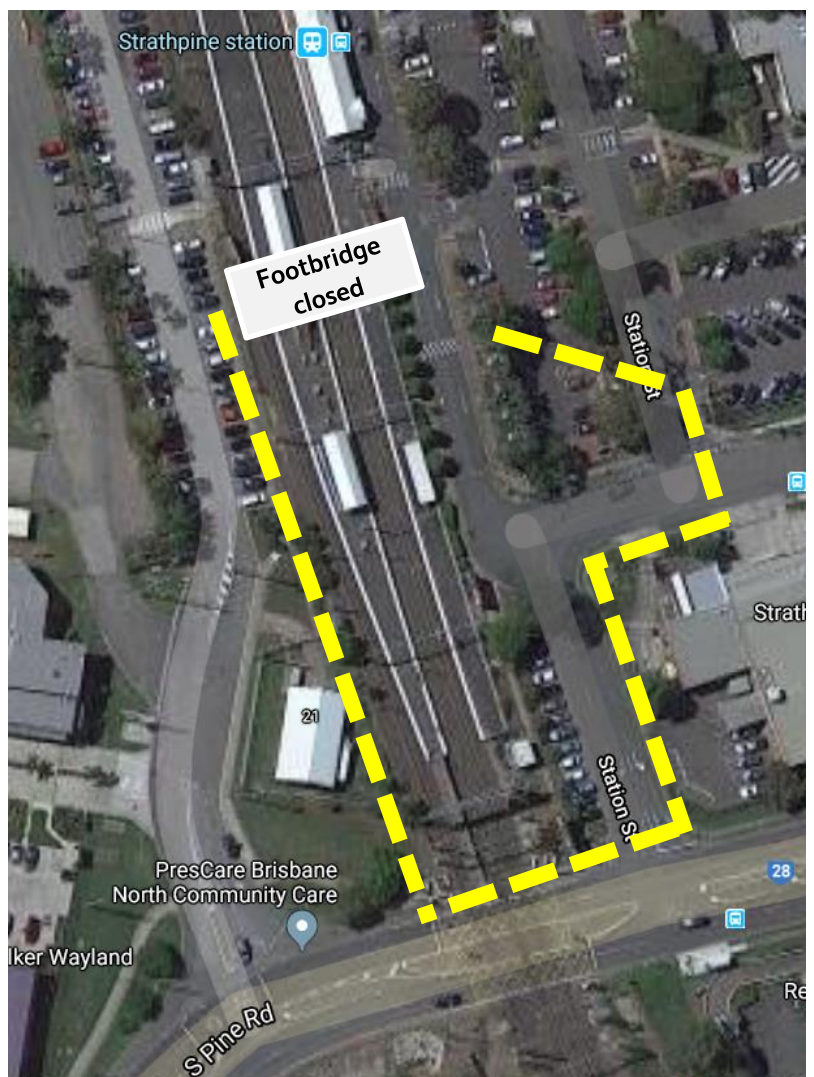
# Temporary footbridge closure

9am-3pm, Saturday 1 February 2020


The station footbridge will be closed for flooring works during this weekend's scheduled track closure.

Pedestrian access across the rail corridor will be via the South Pine Road level crossing only (see photo).

Thank you for your cooperation while we build you a better Strathpine station.



Map data © Google 2020

<b>Footbridge</b>	Closed 9am-3pm Sat 1 Feb
	Pedestrian detour

For more information, please see station staff, call the project team on free call 1800 722 203 or email [stationsupgrade@qr.com.au](mailto:stationsupgrade@qr.com.au)