

Toowoomba Range Clearance Upgrade

Works notification – March 2019

Queensland Rail is continuing work on the Toowoomba Range Clearance Upgrade project. This project involves increasing the clearance of 11 heritage listed tunnels by lowering the tunnel floors and approaches between Toowoomba and Brisbane to ensure more exporters can use rail services. The project will help support the growth and prosperity of Queensland's agricultural sector.

For the safety of our workers and to minimise the impacts to freight and passenger services, the majority of works will be carried out during scheduled track closures and will occur on a 24-hour basis.

In early March, works will occur at Six Chain Tunnel near Grandchester and Victoria Tunnel near Laidley.

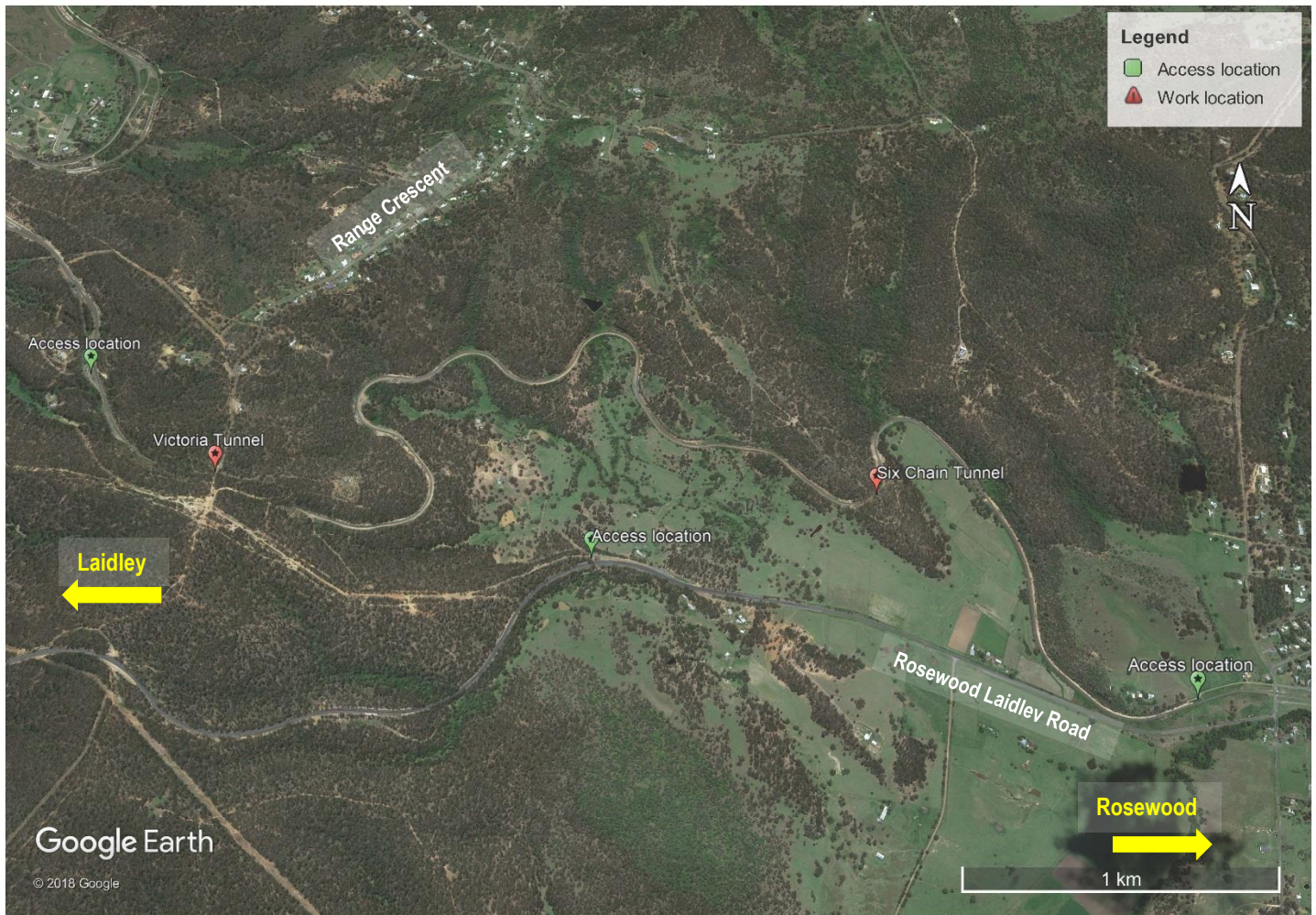
Site mobilisation will commence from 6pm, Friday 1 March and works will be completed by 6am, Tuesday 5 March.

Overview of work

Location	Dates and hours of work	Type of work
Six Chain Tunnel	6pm Friday 1 March until 6am Tuesday 5 March (continuous works)	<p>Cut and remove existing track and ballast, excavation of tunnel floor, drilling of rock bolts and supports and reinstatement of ballast and sleepers.</p> <p>Please be aware that some rock breaking activities may be required if hard rock deposits are encountered within the tunnel.</p> <p>This will involve:</p> <ul style="list-style-type: none">• use of construction machinery including a profiling machine, excavator and drill rigs• potential use of rock breaking equipment, including rock hammers• excavation of materials• use of generators• use of lighting towers at tunnel entrances• the delivery of materials and machinery• light vehicle movements, including reversing beepers and flashing safety lights.
Victoria Tunnel	6pm Friday 1 March until 6am Monday 4 March (continuous works)	<p>Cut and remove existing track and ballast, excavation of existing drainage, including culverts and pipes, followed by the installation of new drainage pits, culverts and pipes.</p> <p>This will involve:</p> <ul style="list-style-type: none">• use of construction equipment, including mobile crane and excavator• use of generators• use of lighting towers at tunnel entrances• the delivery of materials and machinery• light vehicle and truck movements, including reversing beepers and flashing safety lights.

Vehicles and machinery will access Victoria Tunnel via Ryan Road, Laidley. Primary access to Six Chain Tunnel will be via Old Grandchester Road, however some vehicles may require intermittent access via Stokes Road, Grandchester.

Works location



Map data © Google 2018

Queensland Rail is aware noise and lighting from such operations can cause temporary inconvenience to our valued neighbours. Every effort will be made to carry out these works with minimal disruption.

We thank you for your patience as we work to improve our network.

For more information, please call **13 16 17** (during business hours) or email **communityengagement@qr.com.au**

We are moving towards paperless notifications about noise and works. You will still see paper notices as we transition to the new system. Sign up at: **queenslandrail.com.au/EmailNotification** or contact us if you prefer to receive paper copies.