

Toowoomba Range Clearance Upgrade

Works notification – September 2018

Queensland Rail is continuing work on the Toowoomba Range Clearance Upgrade project. This project involves increasing the height of 11 heritage listed tunnels between Toowoomba and Brisbane to ensure more exporters can use rail services. The project will help support the growth and prosperity of Queensland's agricultural sector.

For the safety of our workers and to minimise the impacts to freight and passenger services, the majority of works will be carried out during scheduled track closures.

In September, works will occur at three locations between Spring Bluff and Murphys Creek. Please see the map overleaf for more information.

Site mobilisation will commence from 6pm, Friday 7 September and works will be completed by 6pm, Tuesday 11 September. Works will occur on a 24-hour basis during this time, due to a scheduled track closure, to reduce the impact to freight and passenger services.

Overview of work

Location	Dates and hours of work	Type of work
Tunnel A	From 6pm Friday 7 until 9am Tuesday 11 September (continuous works)	Removal of existing tracks, sleepers and ballast, excavation of material from within the tunnel and the approaches to the tunnel portals, installation of precast headwall structure and concrete drainage pipes and reinstatement of tracks. This will involve: <ul style="list-style-type: none">• use of small construction equipment, including excavators and small mobile cranes• a generator• lighting towers at tunnel entrances• the delivery of materials and machinery• light vehicle and truck movements, including reversing beepers and flashing safety lights.
Tunnel B and Tunnel C	From 6pm Friday 7 until 6pm Tuesday 11 September (continuous works)	Removal of existing tracks and ballast, excavation of material from the approaches to the tunnel portals, installation of rock bolts inside tunnel, drainage works and reinstatement of tracks. This will involve: <ul style="list-style-type: none">• drilling within the tunnel• use of small construction equipment, including excavators and small mobile cranes• a generator• lighting towers at tunnel entrances• the delivery of materials and machinery• light vehicle and truck movements, including reversing beepers and flashing safety lights.

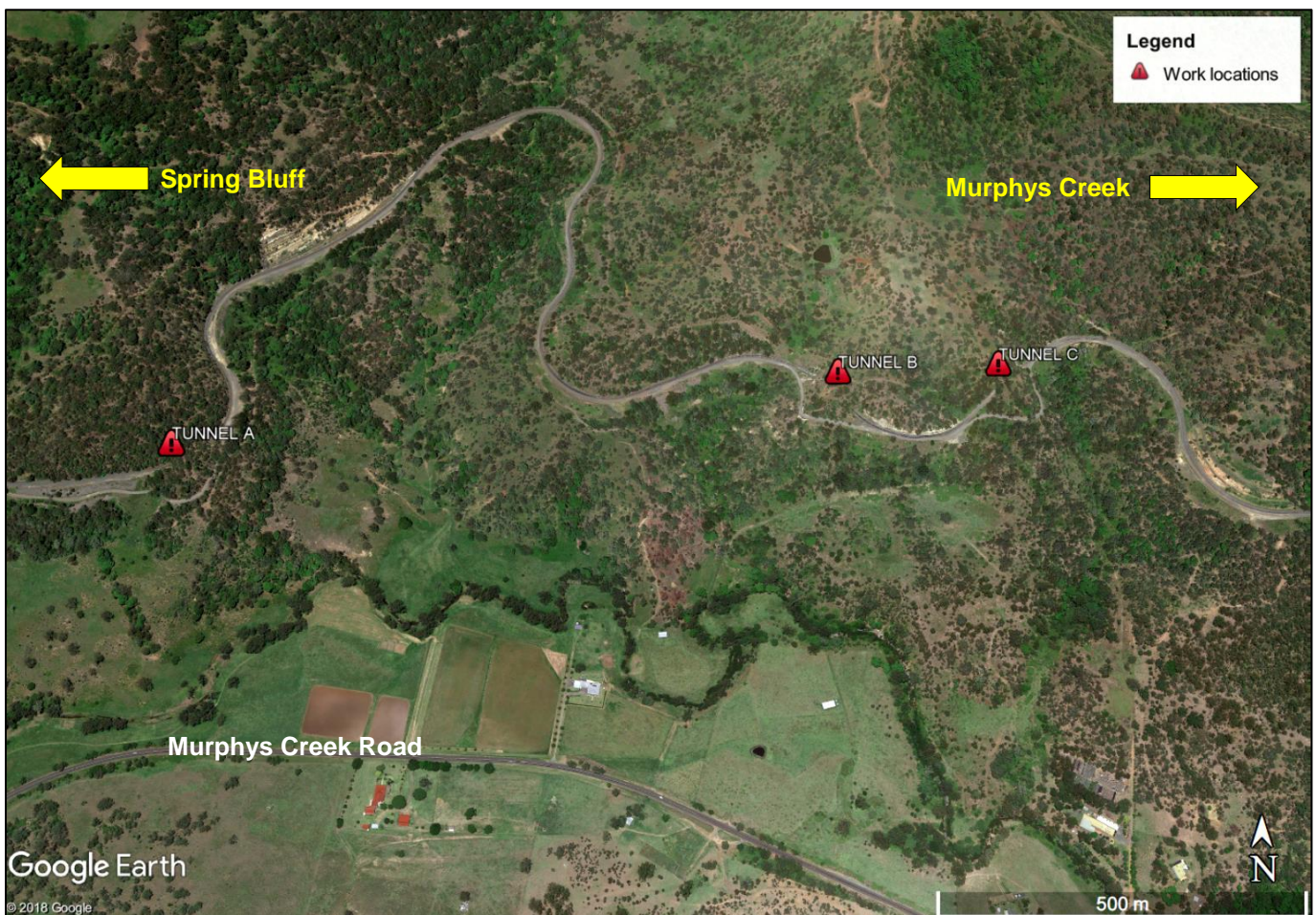
Access to the rail alignment and work locations will be via Donnellys Road at Murphys Creek.

Queensland Rail is aware noise and lighting from such operations can cause temporary inconvenience to our valued neighbours. Every effort will be made to carry out these works with minimal disruption and we apologise for the inconvenience caused.

We thank you for your patience as we work to improve our network.

For more information, please call **13 16 17** (during business hours) or email communityengagement@qr.com.au

Work locations



Map data © 2018 Google

We are moving towards paperless notifications about noise and works. You will still see paper notices as we transition to the new system. Sign up at: queenslandrail.com.au/EmailNotification or contact us if you prefer to receive paper copies.