

# Temporary footbridge closure

## Saturday 30 and Sunday 31 January 2021

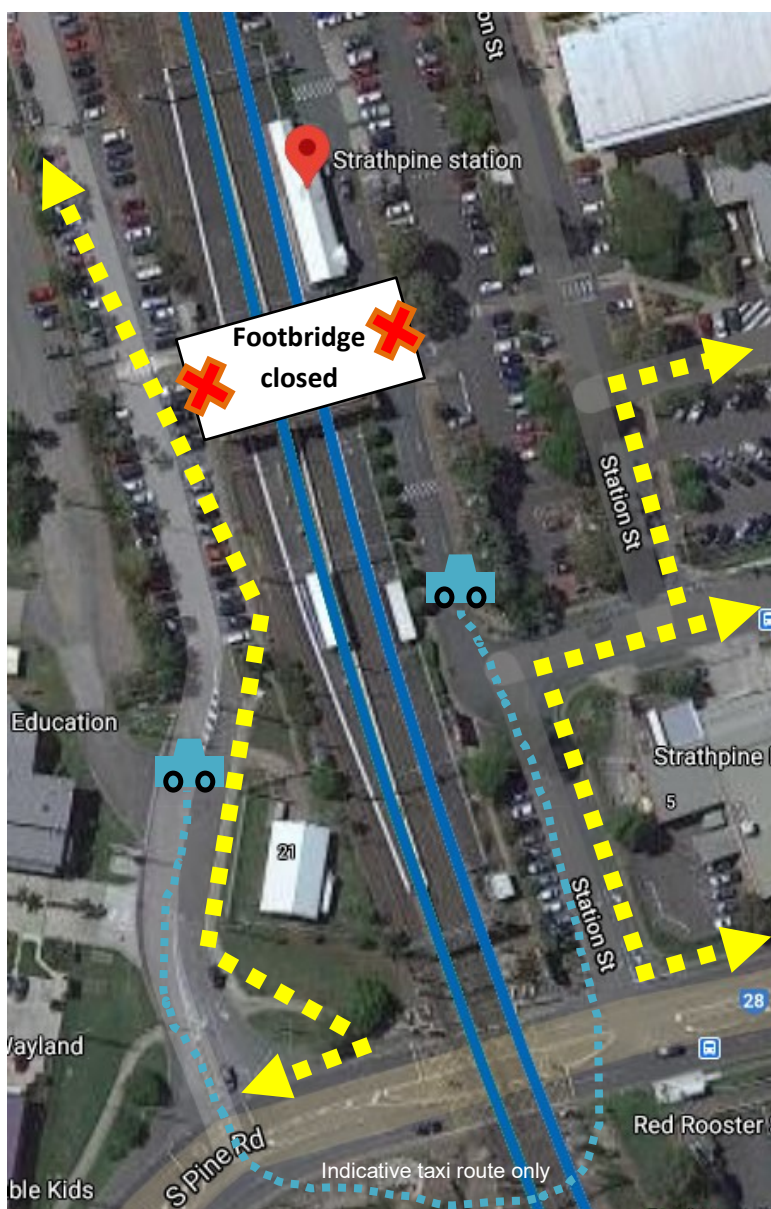
Due to platform works, the station's footbridge will be closed during this weekend's scheduled track closure.

Pedestrian access across the rail corridor will be via the South Pine Road level crossing, if safe to cross.

A free taxi shuttle will transport pedestrians around the closure whenever the level crossing is closed for track works (see map, right).

We thank you for your cooperation and apologise for any inconvenience.

For more information, contact the project team on free call **1800 722 203** or email **stationsupgrade@qr.com.au**



Map data © Google 2021

	Closed Sat 30 and Sun 31 Jan
	Pedestrian detour
	Free taxi shuttle