

Visual amenity update

Improving the visual amenity for the Woombye community

- Queensland Rail is committed to further landscape planting to provide additional screening of the Woombye stabling facility for local residents
- Based on WCRG and community feedback, Queensland Rail has identified:

Three additional planting locations within the stabling facility footprint

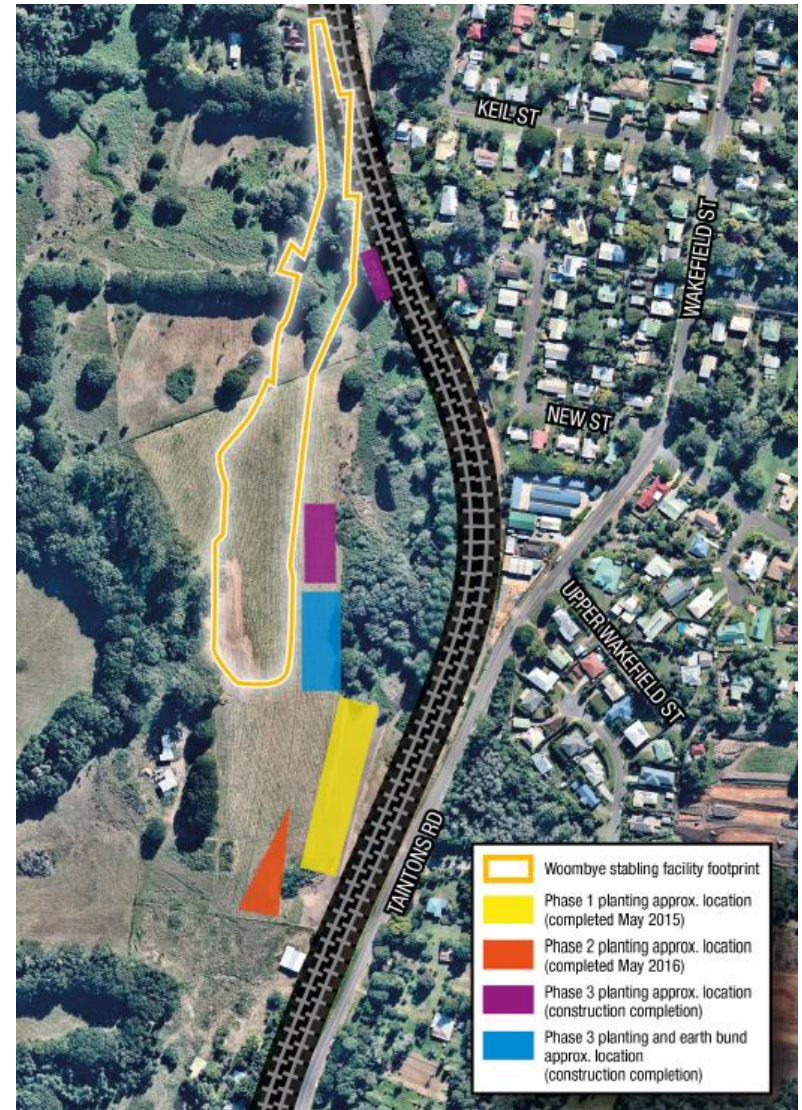
An opportunity to retain the current mound of excess top soil to create an additional visual buffer with planting on top

Improving the visual amenity for the Woombye community

The combined area of the phase three planting will be confirmed upon construction completion. It is estimated that it will be between 1,600 and 3,500 square metres.

Queensland Rail will confirm this once construction is complete, site lines established and the expanse of the earth bund confirmed.

To date, Barung Landcare has planted 4,525 square metres of additional vegetation which equates to approximately 2,570 selected native plants.



Further opportunities to improve the visual amenity

- Based on feedback, Queensland Rail has explored additional ways to provide improved visual amenity of the site for the community
- It has been identified that the existing mound of excess top soil can be retained
- It will be approximately 150 metres long, 1.5 metres high and 5 metres wide (the exact dimensions will be confirmed upon completion of construction)
- The mound may need to be split into two or three separate sections to maintain drainage
- As part of the phase three planting, additional vegetation will be planted on top
- The top soil provides the ideal conditions for planting vegetation.

Update

In May 2015, Queensland Rail planted 2,000 trees to provide an improved landscape buffer from the Woombye stabling facility. Twelve months on, the first phase planting already provides a dense vegetation screen that obscures the view of the temporary site office and construction works.



Next steps

- When construction is complete, the project team will seek further feedback from the community to identify any other sight lines where additional vegetation screening may be required.