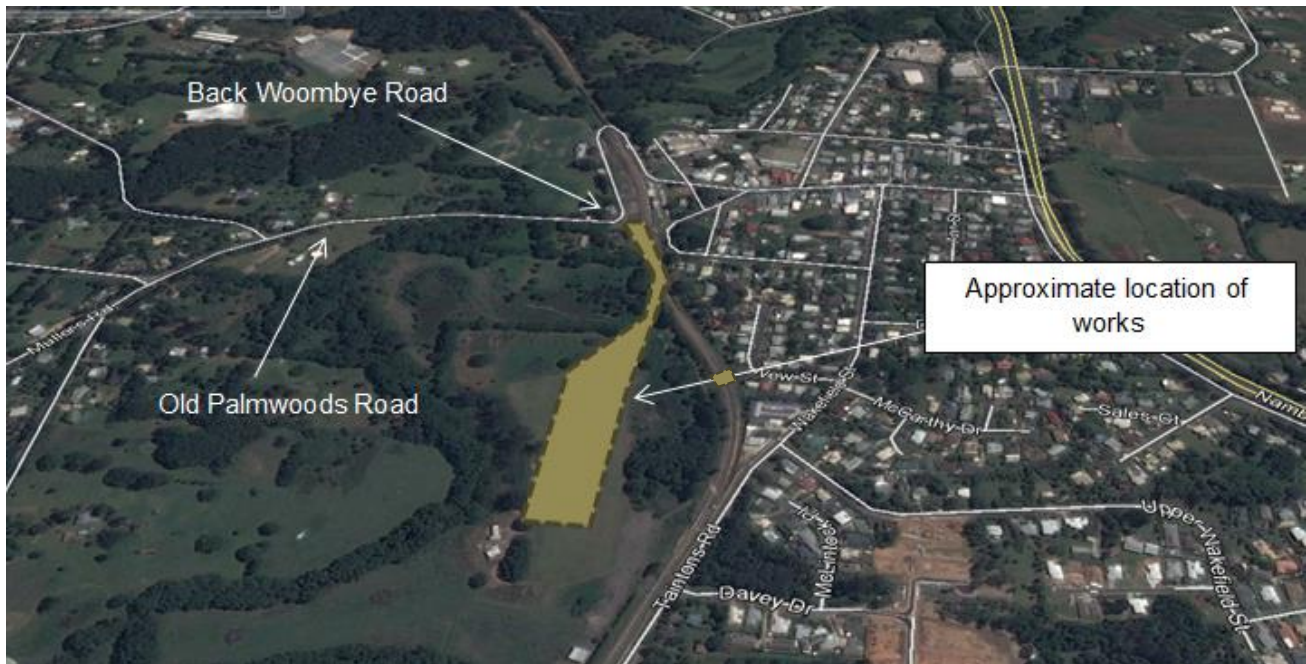


SEQ Rail Stabling Program – Woombye construction notice

As part of the SEQ Rail Stabling Program, Queensland Rail and CPB Contractors will be undertaking vital construction activities along the rail corridor during the scheduled track closure of the North Coast line on Saturday 27 and Sunday 28 August 2016.



Works will occur continuously from **4am Saturday 27 August until 3am Monday 29 August 2016**, weather permitting.

Activities will include:

- Removal and replacement of rail track
- Removal and replacement of ballast and pavement layers at track turn-out location
- Concrete works for the foundations of signals
- Installation of a concrete storm water pipe within the railway corridor adjacent to New Street
- Delivery trucks and workers' vehicles entering the site via the corner of Old Palmwoods Road and Back Woombye Road
- Use of machinery, such as excavators, mobile cranes, front-end loaders, generators, track mountable excavators, directional drilling machine, resurfacing machines and a concrete pump
- Use of small power tools, such as drills, saws and minor vibrating equipment
- Mobile lighting towers to light the work areas
- Delivery and unloading of materials.

For your information



Queensland Rail and CPB Contractors recognise the impact these works may have on local residents and will endeavor to minimise the impact and duration of the work as much as possible. This includes:

- Maintaining access to residents' properties
- Keeping higher noise-generating activities to the earlier stages of shifts wherever possible
- Ensuring plant/equipment used has been maintained
- Minimising light spill e.g. direct light-generating plant and equipment away from residences
- Toolbox talks with work crews to remind them of out of hours work protocols (e.g. no unnecessary shouting, whistling, beeping car horns).

Every effort will be made to keep disruption to a minimum. We appreciate your patience during the construction period and will continue to update you as work progresses.

Who can I contact?

If you have any questions or would like to register for more information, please contact the Project Team on 1800 783 334 (free call) or stabling@qr.com.au.

During out of hours activities CPB Contractors can be reached on 1800 783 331 (press 1). Visit www.queenslandrail.com.au/stabling anytime for more information and updates.